

**Product: Memor, Kyman, Skorpio**

**Distribution Date: 20 July 2011**



## How to change a Postamble

This document provides step by step instructions on how to change the Postamble on the Memor, Kyman and Skorpio product lines for both Win CE and Win Mobile. Please note that your screen appearance may vary slightly.

- 1) Tap on the green barcode icon in the system tray and select CONFIGURE to open the Decoder applet. NOTE: If the icon is grey, tap on it and select WEDGE, the barcode icon will turn green indicating enabled.

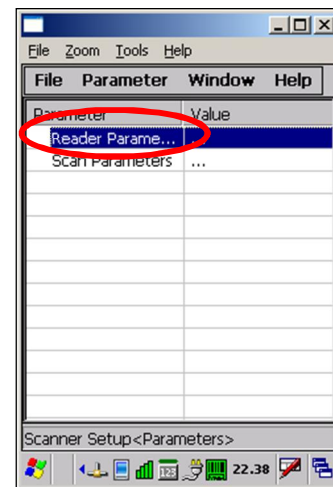
NOTE: The Decoder applet can also be opened in the following manner:

WIN CE: Start → Settings → Control Panel → Decoding

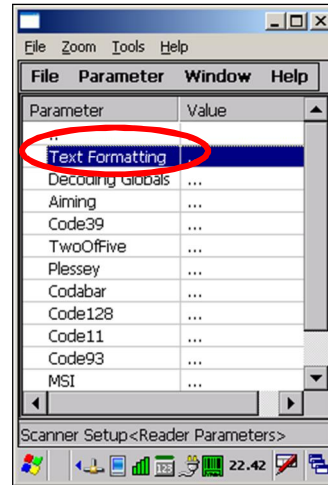
WIN MOBILE: Start → Settings → (System tab) → Decoding



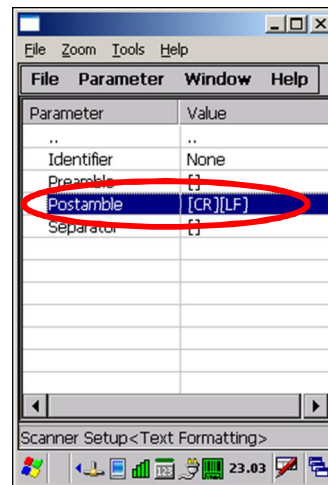
- 2) Select Reader Parameters.



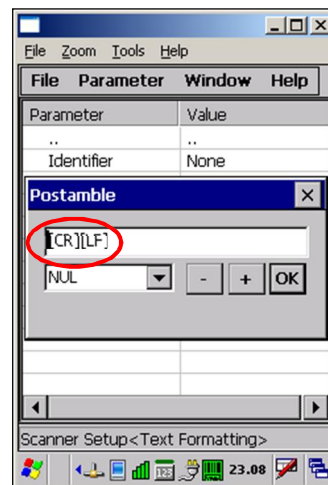
3) Select Text Formatting.



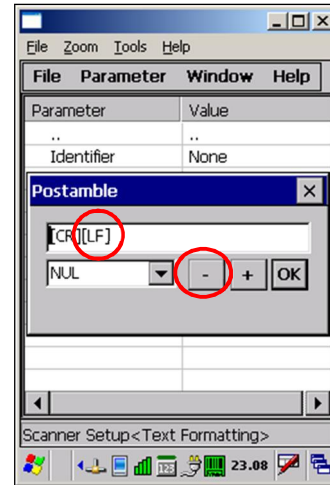
4) Double tap on Postamble. NOTE: The default Postamble setting is [CR] [LF] (Carriage Return, Line Feed), but this may display differently on your device.



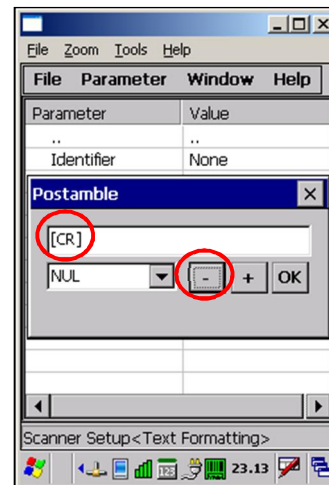
5) A Postamble box displays the enabled settings.



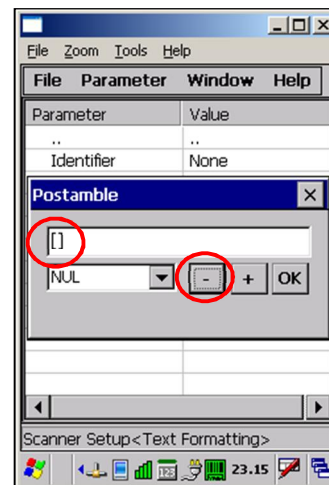
- 6) If a Postamble option is displayed that you wish to remove, click on the minus (-) button.



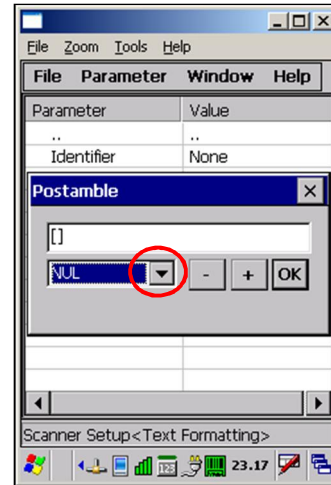
- 7) If more than 1 Postamble is enabled, click on the Minus (-) button again to remove the next Postamble.



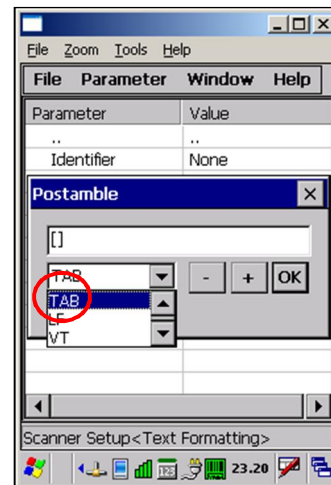
- 8) The brackets now display as empty indicating that no Postamble is set.



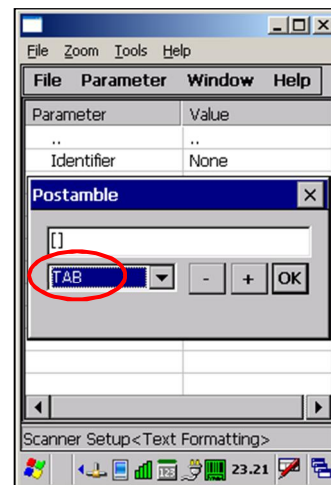
9) As an example, the Postamble will be changed to a TAB. Click on the Down Arrow as noted in the screen to the right.



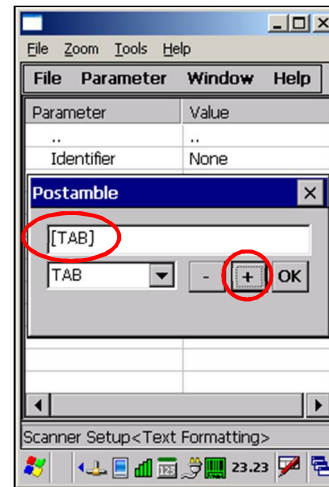
10) In the dropdown box, select TAB from the list by tapping on it.



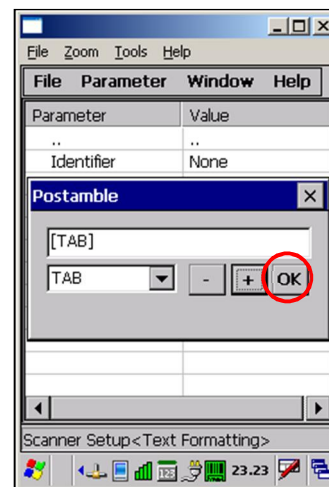
11) Tab now displays in the dropdown box field.



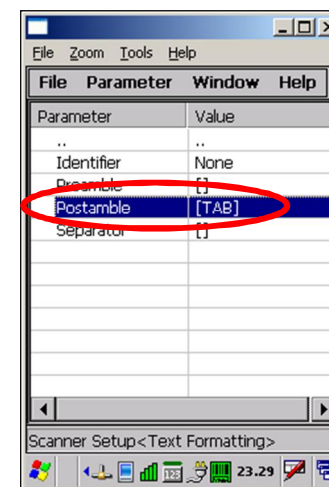
12) Click on the PLUS (+) button. [TAB] now displays in the Postamble field.



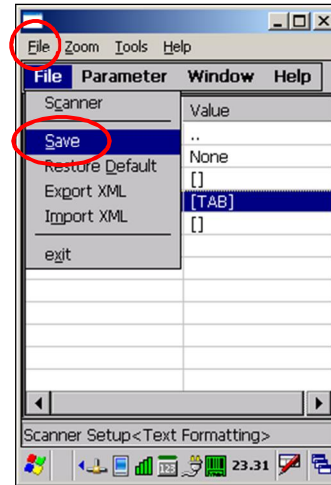
13) Select OK.



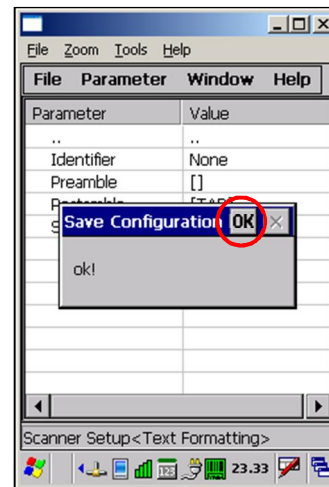
14) The previous screen displays and the Postamble line should now display [TAB].



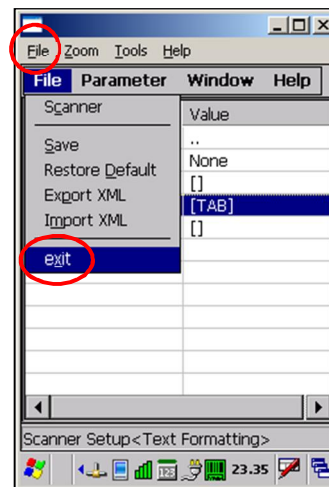
15) Select FILE → SAVE to save the new settings.



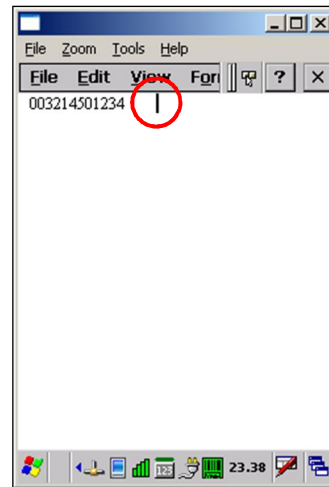
16) Select OK to Save Configuration.



17) To exit the Decoder applet, select FILE → EXIT.



18) To test the new setting, return to the Desktop, open Microsoft WordPad and scan a barcode. The cursor will now automatically tab after every scan. NOTE: Other Postamble options can be selected by choosing the Postamble of choice and following the procedure as outlined in steps 9 through 17.



## References

For more information, click on the options below to download the Product Manual for each device as noted:

1. [Memor Users Guide](#)
2. [Kyman Users Guide](#)
3. [Skorpio Users Guide](#)

For additional assistance, please contact your local [Technical Support](#).

Additional information is available on [www.adc.datalogic.com](http://www.adc.datalogic.com).