

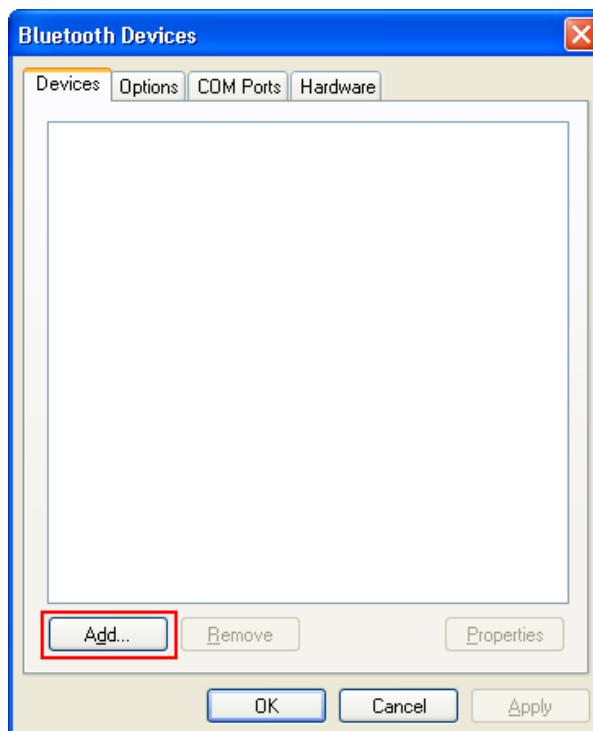
POWERSCAN PBT8300™ BLUE TOOTH CONNECTION WITH A HID PROFILE

WINDOWS XP

1. To configure the reader to work in HID Profile, scan the label below:



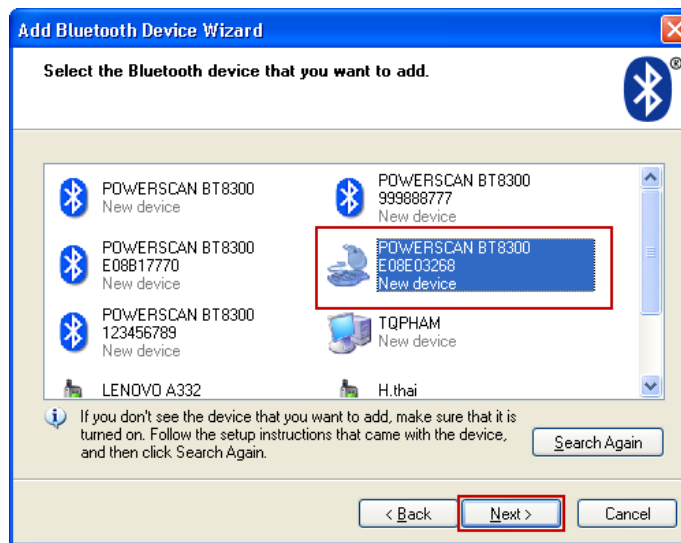
From your PC's system tray, open Bluetooth icon and choose **Add a Device** to search for Bluetooth devices.



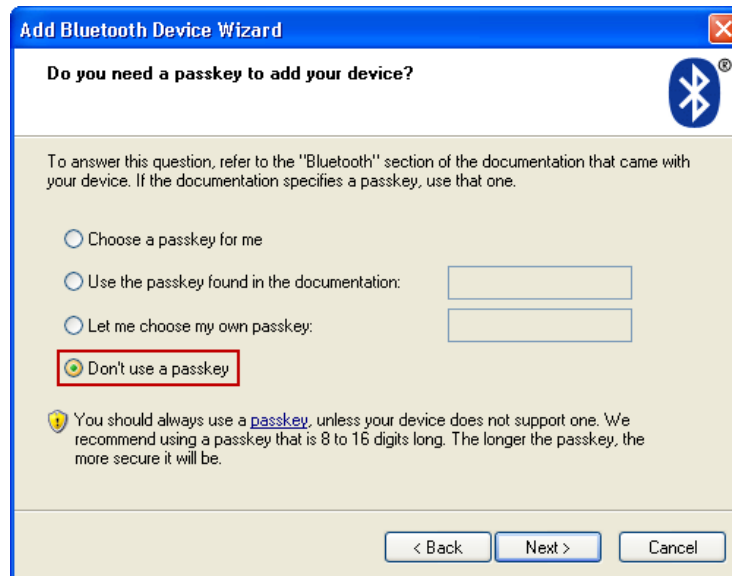
2. Select **My device is set up and ready to be found**. Click **Next** to continue



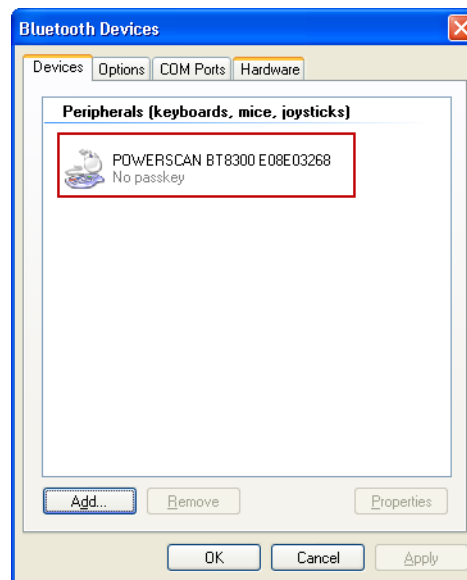
3. After a few seconds, a window will appear showing all Bluetooth devices within radio range. Select the reader you want to connect with.



4. Select **Don't use a passkey**, then click **Next** to continue.



5. Wait as your Bluetooth device connects to the reader. Four ascending beeps will be emitted, signaling that the reader has been successfully connected to the Bluetooth-enabled PC. Devices connected via BT will be displayed in the Bluetooth Devices window.



6. Now the user can read bar code labels and verify the data can be observed in Notepad on the PC.

