

Datalogic S.r.l.
Via San Vitalino 13
40012 Calderara di Reno (BO)
Italy
Tel. +39 051 3147011
Fax +39 051 3147205

©2016-2019 Datalogic S.p.A. and/or its affiliates

♦ All rights reserved. ♦ Without limiting the rights under copyright, no part of this documentation may be reproduced, stored in or introduced into a retrieval system, or transmitted in any form or by any means, or for any purpose, without the express written permission of Datalogic S.p.A. and/or its affiliates. Owners of Datalogic products are hereby granted a non-exclusive, revocable license to reproduce and transmit this documentation for the purchaser's own internal business purposes. Purchaser shall not remove or alter any proprietary notices, including copyright notices, contained in this documentation and shall ensure that all notices appear on any reproductions of the documentation. Should future revisions of this manual be published, you can acquire printed versions by contacting your Datalogic representative. Electronic versions may either be downloadable from the Datalogic website (www.datalogic.com) or provided on appropriate media. If you visit our website and would like to make comments or suggestions about this or other Datalogic publications, please let us know via the "Contact Datalogic" page.


Disclaimer

Datalogic has taken reasonable measures to provide information in this manual that is complete and accurate, however, Datalogic reserves the right to change any specification at any time without prior notice. Datalogic and the Datalogic logo are registered trademarks of Datalogic S.p.A. in many countries, including the U.S.A. and the E.U. The Joya logo is a trademark of Datalogic S.p.A. and/or its affiliates, registered in the U.S. and the E.U. All other trademarks and brands are property of their respective owners.

Patents

See www.patents.datalogic.com for patent list.

Support Through the Website

Datalogic provides several services as well as technical support through its website. Log on to www.datalogic.com. For quick access, from the home page click on the search icon , and type in the name of the product you're looking for. This allows you access to download Data Sheets, Manuals, Software & Utilities, and Drawings. Hover over the Support & Service menu for access to Services and Technical Support.

Warranty Terms and Conditions

The warranty period is 1 year for the device and 90 days for consumables (e.g. battery, power supply, cable etc.) from date of purchase at our company.



Joya Touch
Single Slot Dock Locking



Quick Start Guide

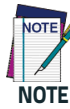


See the Regulatory Addendum included with your product for additional regulatory, safety and legal information.

©2016-2019 Datalogic S.r.l. ♦ All rights reserved. Datalogic and the Datalogic logo are registered trademarks of Datalogic S.p.A. in many countries, including the U.S.A. and the E.U.



www.datalogic.com



Read this manual carefully before using the Joya Touch Single Slot Dock Locking. The user is responsible for any damages caused by incorrect use of the equipment or by inobservance of the indication supplied in this manual.

Out of the Box

The Joya Touch Single Slot Dock Locking package contains:

- 1 Joya Touch Single Slot Dock Locking
- 1 metal plate
- 1 unlock key
- 4 cross pan head screws
- 1 round washer head screw
- 1 Quick Start Guide
- 1 Safety & Regulatory Addendum



Keep the original packaging for use when sending products to the technical assistance center. Damage caused by improper packaging is not covered under the warranty.

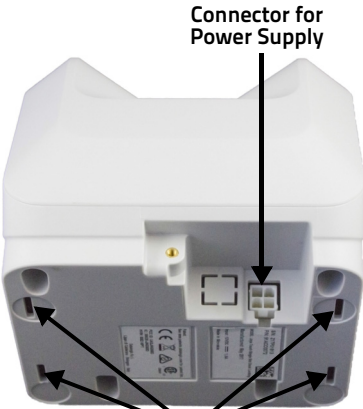
General View
Front View

Unlocking Key Opening



Battery Charger LED

Bottom View



Connector for Power Supply

Mounting Holes

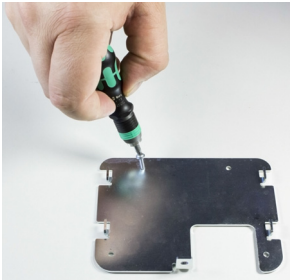
Accessories

- 91ACC0045 Joya Touch Cradle Unlock Key (5 PCS)
- 91ACC0048 Joya Touch 3-Slot Cradle Power Supply. Line Cord required

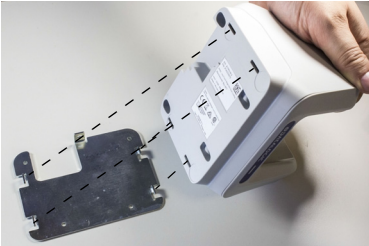
Fast the Dock to a Surface

To securely fasten the Joya Touch Single Slot Dock Locking to tables, desks and other surfaces, and to prevent the dock from moving when you remove the device, use the metal plate included in the box.

1. Secure the metal plate to the desired surface with the 4 provided cross pan head screws. We recommend to use a torx-10 screwdriver.



2. Insert the dock into the metal plate. Each protrusion on the metal plate is aligned with a slot in the dock to prevent incorrect insertion.



3. Push the dock backward until it snaps into place.



4. Secure the dock with the provided round washer head screw. Use a cross screwdriver.



Remove the Joya Touch from the Single Slot Dock Locking

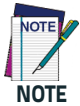
The Joya Touch Single Slot Dock Locking can be unlocked using the unlock key provided with the cradle or by software sending an unlock command from the inserted device (see the Joya Touch user’s manual or the SDK documentation).

To locally unlock the dock and remove the Joya Touch:

1. Insert the unlock key into the opening and gently press it all the way down:



2. Remove the Joya Touch while keeping the unlock key pressed:



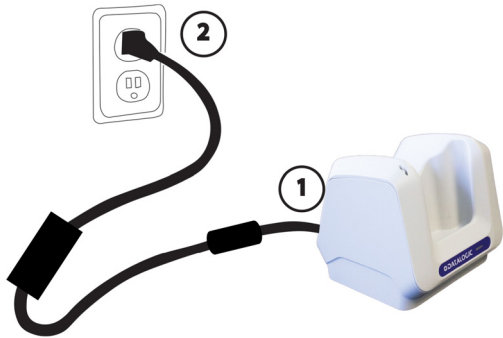
The Joya Touch gets warm during charging. This is normal and does not mean a malfunction.

Powering the Dock

To prevent the risk of short-circuiting, first plug the power cord into the power connector on the back of the dock, then connect the power cord to the power supply.



Use only the Datalogic power supply 91ACC0048 to power the Joya Touch Single Slot Dock Locking.
The Single Slot Dock Locking cannot be daisy-chained to a Joya Touch 3-Slot Cradle.



Do not put any foreign object such as, but not limited to, coins, paper clips, stickers inside the slot of the dock (see the picture below).



Technical Specifications

Electrical Features	
Consumption	12V 5A
Indicators	Battery Charger LED (bi-color)
Environmental Features	
Operating Temperature*	-10° to 45° C
Storage Temperature	-20 to 70° C
Humidity**	95% non condensing for temperatures < 40° C
Mechanical Features	
Dimensions (L x W x H)	Dock: 124x119.6x114.5mm / 4.9x4.7x4.5in
	Dock with Joya Touch Handheld: 124x119.6x175.7mm / 4.9x4.7x6.9in
	Dock with Joya Touch Pistol Grip: 124x148.8x175.7mm / 4.9x5.9x6.9in
Weight	Dock: 522g/ 18.4oz
	Dock with Metal Plate: 634g/ 22.4oz

* The Joya Touch should be charged at an ambient temperature between 0 and 35° C to achieve the maximum charging rate. Never charge the main device in a closed space where excessive heat can build up. Close to the limits of the working temperature, some display and/or battery performance degradation may occur.

** Multiple rapid humidity and/or temperature variations may cause condensing.

LED Indicators

LED	Status
Power On (Green LED)	
Solid green for 3 seconds	Dock bootstrap: cradle application started.
Short blink every few seconds	Dock standby (if the standby LED is enabled): the dock is powered and ready, no device inserted. You can enable/disable the standby LED feature from DL Cradle Manager.
Off	Dock standby (if the standby LED is disabled): the dock is powered and ready, no device inserted. You can enable/disable the standby LED feature from DL Cradle Manager.
Battery Charger LED (Bicolor Green/Red LED)	
Off	Device not charging or not inserted (see above).
Solid red	Device is charging.
Solid green	Device charging completed.
Maintenance LED (Red LED)	
Blink red, 1 quick pulse	Cradle not calibrated. Solution: perform an "auto calibration" from DL Cradle Manager. Ensure that the lever is free to move.
Blink red, 2 quick pulses	Lever wrong position. It is open but it should be closed or vice versa. Solution: restore the lever position (e.g.remove the mechanical key from the slot).
Blink red, 3 quick pulses	FOD (Foreign Object Detection). It's a WLC error related to metallic parts between transmitter and receiver coils. The power transfer is suspended. Solution: remove the device from the cradle, then remove the metallic part causing the problem.
Blink red, 4 quick pulses	EOC (end of charge) timeout error. The WLC EOC signal has been kept enabled by the terminal for too much time. Typically, it is caused by a bug in the terminal firmware. The power transfer is disabled.
Blink red, 5 quick pulses	WLC generic error. WLC system seems unstable and unable to setup a stable power transfer, within a reasonable time. The power transfer is suspended. Solution: try to extract the device from the cradle and to re-insert it again.
Blink red, 6 quick pulses	Device charging error.
Solid red	Firmware upgrade.

Radio Technologies and Frequency Bands

The Joya Touch Single Slot Dock Locking incorporates the following radio technologies and supports the corresponding frequencies, as specified below:

Radio Technology	Frequency Bands
NFC (Near Field Communication)	13.56MHz
Wireless Charging (Transmitter)	130kHz