

Product: Elf, Falcon X3

Distribution Date: 27 September 2011



Reassigning Key Functions on Elf or Falcon X3 – Windows Mobile

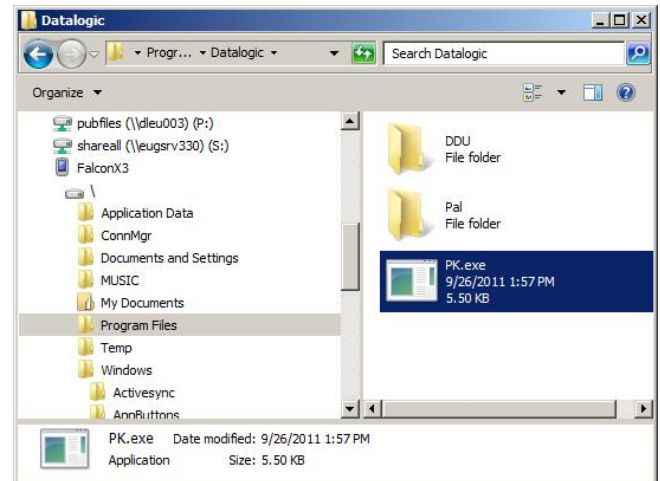
The Push Key (PK) program can be used to reassign keys, like making a key press of F1 display the number 4. The process is specific to mobile devices and firmware versions. This document is for Elf or Falcon X3. While this process will work on all firmware releases, it is recommended that the Elf or Falcon X3 be upgraded to the latest release.

- 1) Download the PK program from the link and save it to the desktop.
- 2) Establish a connection to the Device with ActiveSync or Windows Mobile Device Center (WMDC).
- 3) Select Explore from the ActiveSync menu or WMDC.

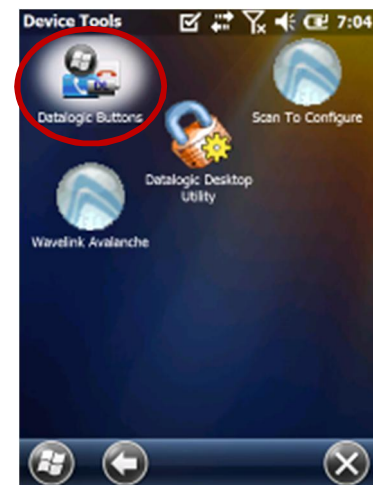
<http://dlmgo.com/tf/TECHniques/Utilities/PK.zip/PK.exe>



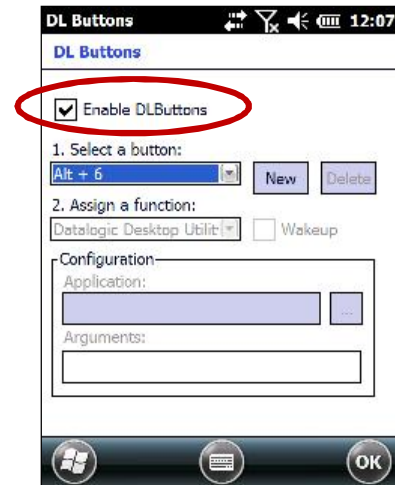
- 4) Click and drag the PK.exe program from the PC into the Program Files → Datalogic folder.



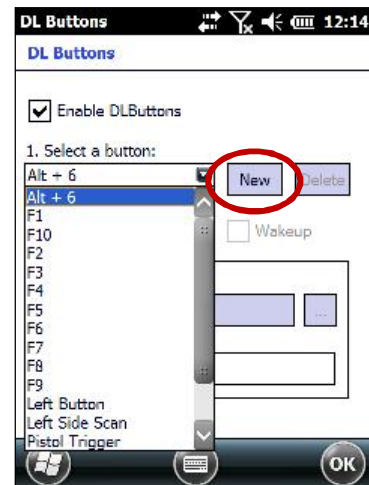
- 5) Remove the Device from the dock and cold boot it. This will insure that no other programs are running and using the key or key sequences to be reprogrammed. For instructions on Cold Booting, see the Users Manual. Note: There is a link to the manual at the end of these instructions.
- 6) Open the Datalogic Buttons applet by navigating to Start → Device Tools → Datalogic Buttons



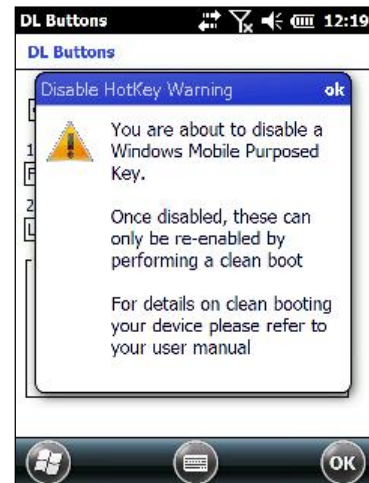
- 7) Check the box next to Enable DL Buttons to activate the program.



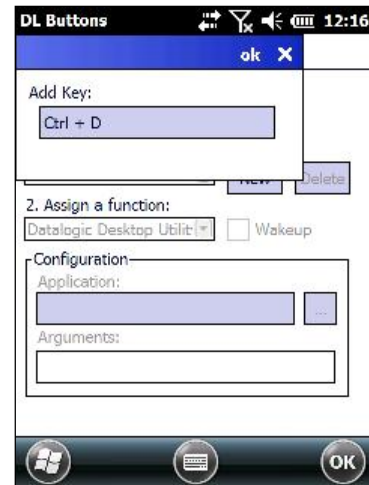
- 8) Select the button to modify. If the button is not in the list, select New.



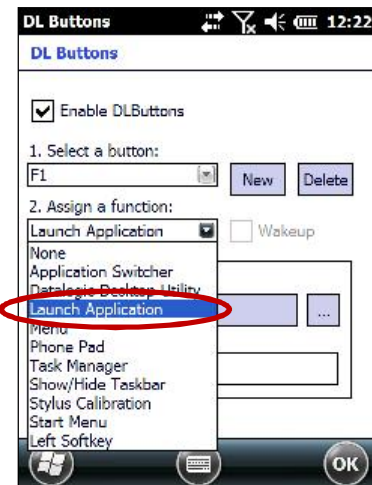
Note: If you are remapping a functions key, you may receive a warning. Click ok to continue.



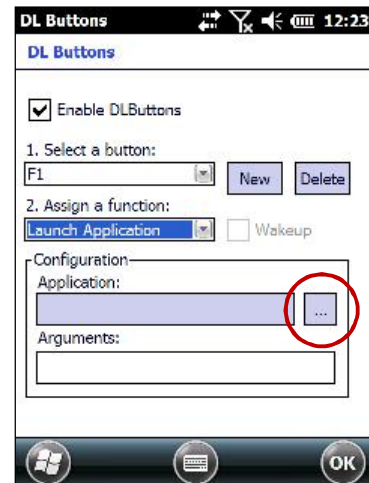
- 9) If you selected New, type the key or key strokes into the Add Key: box. Note that the Soft Input Panel can be used instead of the device keyboard.



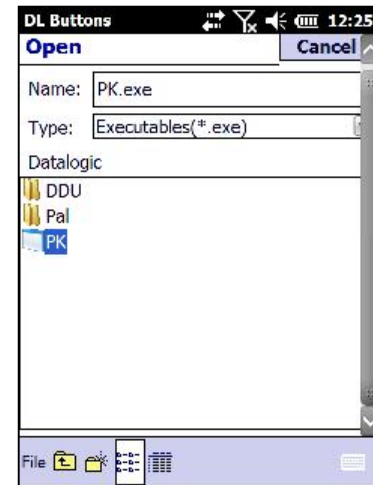
- 10) In the Assign a Function, select Launch Application.



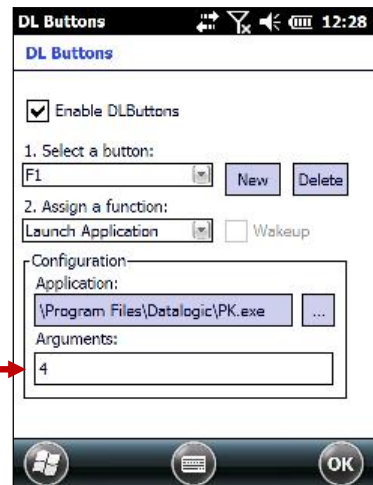
- 11) Select the Browse button to the right of the Application selection window.



- 12) Navigate to the location of the PK.exe program and click on PK.



- 13) Type in the key or key strokes you wish to have mapped in the Arguments: box



- 14) Click OK. The key should now be redefined

