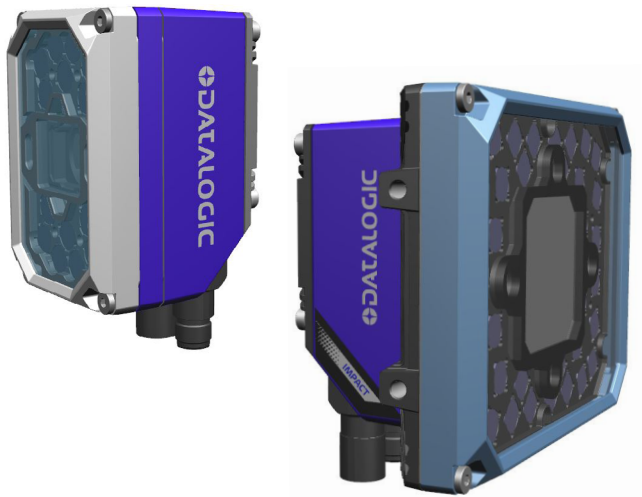


MATRIX 320™ AND  
P2x-SERIES™ ACCESSORIES


QUICK REFERENCE GUIDE



Covers and filters

©2020-2021 Datalogic S.p.A. and/or its affiliates  
• All rights reserved • Without limiting the rights under copyright, no part of this documentation may be reproduced, stored in or introduced into a retrieval system, or transmitted in any form or by any means, or for any purpose, without the express written permission of Datalogic S.p.A. and/or its affiliates • Datalogic and the Datalogic logo are registered trademarks of Datalogic S.p.A. in many countries, including the U.S. and the E.U.

SUPPORT THROUGH THE WEBSITE

Datalogic provides several services as well as technical support through its website.  
Log on to [www.datalogic.com](http://www.datalogic.com).  
For quick access, from the home page click on the search icon , and type in the name of the product you're looking for. This allows you access to download Data Sheets, Manuals, Software & Utilities, and Drawings.  
Hover over the Support & Service menu for access to Services and Technical Support.

[www.datalogic.com](http://www.datalogic.com)



 <p>Please read the instructions contained herein carefully to prevent damage to the reader and its components.</p>	 <p>Please read the instructions contained herein carefully to prevent damage to the reader and its components.</p>	 <p>Please read the instructions contained herein carefully to prevent damage to the reader and its components.</p>	 <p>Please read the instructions contained herein carefully to prevent damage to the reader and its components.</p>
 <p>Please read the instructions contained herein carefully to prevent damage to the reader and its components.</p>	 <p>Please read the instructions contained herein carefully to prevent damage to the reader and its components.</p>	 <p>Please read the instructions contained herein carefully to prevent damage to the reader and its components.</p>	 <p>Please read the instructions contained herein carefully to prevent damage to the reader and its components.</p>
 <p>Please read the instructions contained herein carefully to prevent damage to the reader and its components.</p>	 <p>Please read the instructions contained herein carefully to prevent damage to the reader and its components.</p>	 <p>Please read the instructions contained herein carefully to prevent damage to the reader and its components.</p>	 <p>Please read the instructions contained herein carefully to prevent damage to the reader and its components.</p>
 <p>Please read the instructions contained herein carefully to prevent damage to the reader and its components.</p>	 <p>Please read the instructions contained herein carefully to prevent damage to the reader and its components.</p>	 <p>Please read the instructions contained herein carefully to prevent damage to the reader and its components.</p>	 <p>Please read the instructions contained herein carefully to prevent damage to the reader and its components.</p>

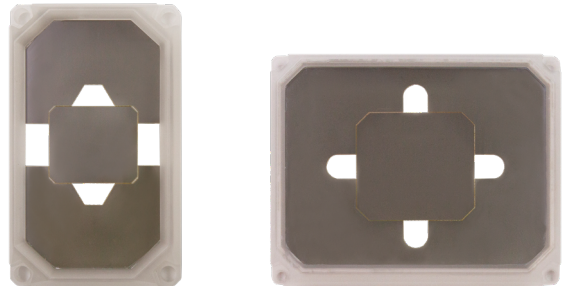
Standard and ESD Covers



Standard cover LT 14 LEDs      Standard cover LT 36 LEDs

Description	Order number
Cover STD LT 14L M320/P2	93ACC0271
Cover STD LT 36L M320/P2	93ACC0272
Cover ESD LT 14L M320/P2	93ACC0278

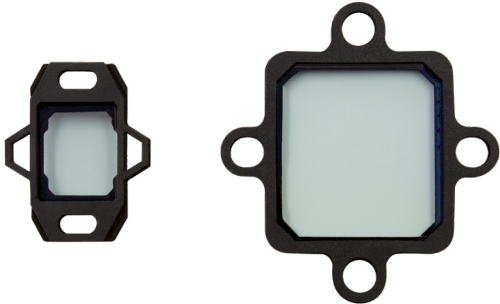
Polarizing Covers



Polarizing Cover LT 14 LEDs      Polarizing Cover LT 36 LEDs

Description	Order number
Cover Polarizer LT 14L M320/P2	93ACC0273
Cover Polarizer LT 36L M320/P2	93ACC0274

Filters



YAG Cut Filter LT 14 LEDs      YAG Cut Filter LT 36 LEDs

Description	Order number
Filter YAG Cut LT 14L M320/P2	95A900018
Filter YAG Cut LT 36L M320/P2	95A900022
Half Polarizer Kit LT 14L M320/P2	93ACC0275
Filter RED Bandpass 635nm LT 14L M320/P2	95A900015
Filter BLU Bandpass 470nm LT 14L M320/P2	95A900016
Filter IR Bandpass 850nm LT 14L M320/P2	95A900017
Filter RED Bandpass 635nm LT 36L M320/P2	95A900019
Filter BLU Bandpass 470nm LT 36L M320/P2	95A900020
Filter IR Bandpass 850nm LT 36L M320/P2	95A900021
Filter UV Cut Longpass 415 LT 14L M320/P2	95A900039
Filter UV Cut Longpass 415 LT 36L M320/P2	95A900040
Filter IR Cut LT 14L M320/P2	95A900064
Filter IR Cut LT 36L M320/P2	95A900065

COVER REPLACEMENT



**CAUTION:** The reader must be disconnected from the power supply during the cover replacement procedure.

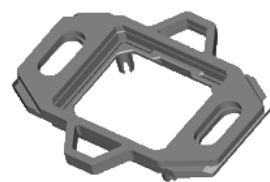


**CAUTION:** Make sure to operate in a dust-free environment during the cover replacement procedure.

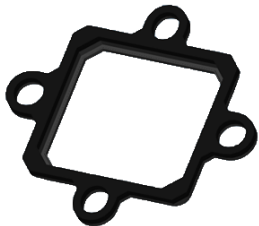
1. Unscrew the four screws using a 2.5 mm Allen wrench.
2. Remove the cover. The cover will remain attached to the body because of the gasket. To unmount it properly, it is recommended to gently lever the cover from its corners using a flat blade screwdriver between the cover and the body of the reader. See Fig. 1 and Fig. 2.



**CAUTION:** When removing the cover to replace it, the Poron filter frame might stick to the removed window. Make sure to reassemble it.



Poron filter frame  
(14 LEDs illuminator model)



Poron filter frame  
(36 LEDs illuminator model)



**CAUTION:** All cover accessories are supplied with a mounted gasket. When replacing the cover, the gasket may remain attached to the base. Make sure to remove the old gasket, since the new cover is already supplied with its own gasket.

3. Make sure the new cover is free of dust, dirt and fingerprints. If necessary, wipe it clean using soft material and alcohol. Avoid any abrasive substances.



**CAUTION:** The cover has a predefined mounting direction (see Fig. 3 and Fig. 4). For the 14 LEDs model (Fig. 3), make sure to align the identification grooves to the right side. For the 36 LEDs model (Fig. 4), the illuminator has one pin different from the other three: make sure to align this special pin with the correspondent cover seat.

4. Place the new cover on the reader and press the cover frame edges.



**CAUTION:** To avoid damage, do not press on the window.

5. Insert the four screws and loosely tighten them in a clockwise direction.
6. Finally tighten the screws to a torque of 0.8 N m.

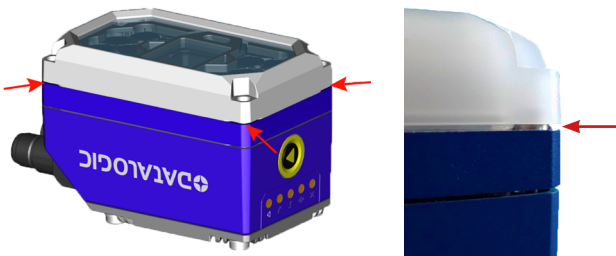


Fig. 1 - Removing the cover (14 LEDs model)

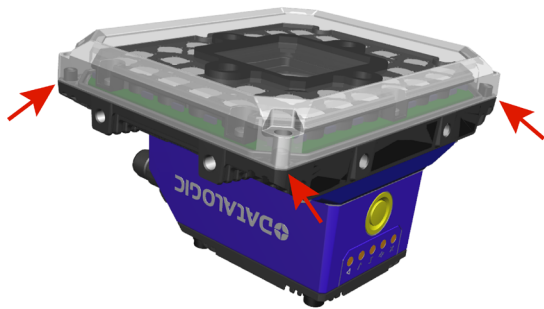


Fig. 2 - Removing the cover (36 LEDs model)

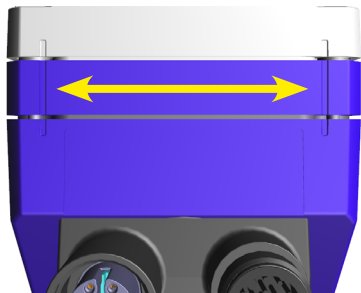


Fig. 3 - Aligning the cover (14 LEDs model)

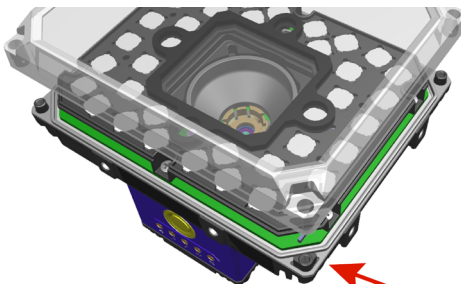


Fig. 4 - Aligning the cover (36 LEDs model)

FILTER MOUNTING INSTRUCTIONS



**CAUTION:** The reader must be disconnected from the power supply during the procedure.

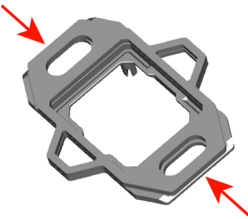


**CAUTION:** Make sure to operate in a dust-free environment during the procedure.

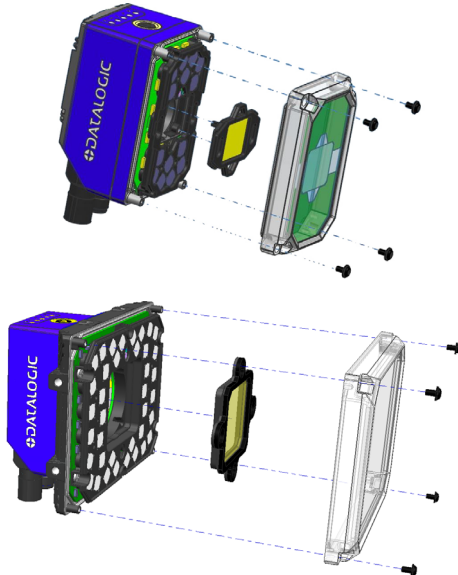


**NOTE:** For correct use of the Half Polarizer, use DL.CODE software release 1.9.2 and later.

1. Temporarily remove the front cover. Refer to the "Cover replacement" section on the front side.
2. Unmount the original light shield (or any other filter) grabbing it from the sides and pulling it up.
3. Place the filter in the appropriate location. The filter is equipped with two pins at the bottom that guide its insertion into the product.



**NOTE:** You can mount the filter in two equivalent directions by rotating it 180°.



**CAUTION:** Make sure that the filter is correctly placed without any tilt before mounting the cover back on the reader body.

4. Finally, mount the cover back on the reader body. Refer to the "Cover replacement" section on the front side.