



# HEALTHCARE

Industry Guide



# Datalogic at a glance

**Datalogic Group** is a global leader in the **automatic data capture and industrial automation** markets. It is well known around the world for designing and producing barcode readers, mobile computers, sensors for detection, measurement and safety, RFID, machine vision and laser marking systems. Datalogic solutions help customers increase the quality of their processes in the **Retail, Manufacturing, Transportation & Logistics**, and **Healthcare** industries.

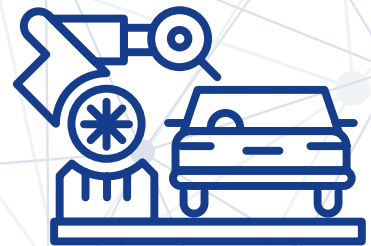
The Group has **more than 50 years of history** behind it, during which enormous successes have been achieved: **10 R&D centers and 3 DL Labs in Italy, USA, Vietnam, China, Czech Republic and Sweden; 10 manufacturing and repair facilities** in USA, Hungary, Slovakia, Italy, China and Vietnam; a **portfolio of about 1,200 patents and patent applications** in multiple jurisdictions; thousands of prestigious partners and customers spread across five continents.

Datalogic Group has **offices in 28 countries worldwide**, with the headquarters in Bologna, Italy. It is through the close cooperation of **approximately 2,700 employees** that Datalogic can boast some of the most remarkable automatic data capture and factory automation solutions available today in the market.

## Datalogic Target Industries



HEALTHCARE



MANUFACTURING



TRANSPORTATION & LOGISTICS



RETAIL

# Healthcare Industry

## HOSPITAL

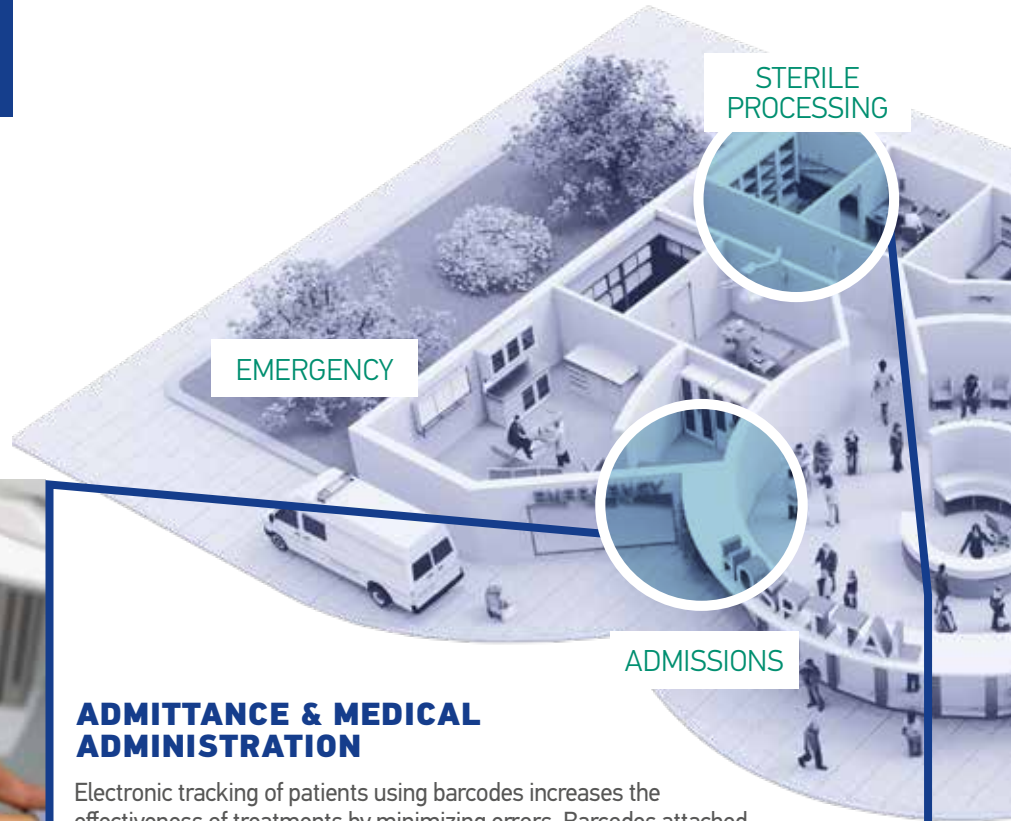
Patient safety and the prevention of medical errors are among the healthcare industry's foremost concerns. Healthcare professionals rely on Datalogic barcode scanners during direct care activities to guarantee correct patient identification, medication verification and a comprehensive Electronic Medical Records (EMR) management.

- Point-of-Care
- Admission
- Sterile Processing
- Inventory management
- Shipping & Receiving

*We empower the entire Healthcare ecosystem from safe point-of-care applications to precise inventory management.*



# HOSPITALS



## ADMITTANCE & MEDICAL ADMINISTRATION

Electronic tracking of patients using barcodes increases the effectiveness of treatments by minimizing errors. Barcodes attached to medical charts and patient wristbands enable accurate identification from admission to discharge. Datalogic handheld scanners, mobile computers, presentation scanners and interactive devices ensure the correct treatment while eliminating manual data handling errors in patient files, medicine tracking, and follow-up activities. Interactive self-service kiosks can further support patient navigation by providing immediate access to information about the department or clinical unit where their appointment is scheduled.



## SURGERY TOOLS

Hospitals and medical environments require extreme accuracy in tracking disposable item expiration and non-disposable instrument cleaning and sterilization. This information maximizes quality of care and reduces risk of contamination. Datalogic technology delivers solutions for both applications. Surgical instruments are permanently etched using Datalogic laser marking systems allowing for extended traceability despite harsh chemical cleaning and autoclave sterilization. Datalogic scanners and mobile computers combine the latest data capture technology with Disinfectant-Ready enclosures designed to withstand daily cleaning with harsh chemicals to effectively fight germs and bacteria. These devices allow tracking of supplies and instruments from sterile inventory to the operating room.



# 5 PATIENT'S RIGHTS

RIGHT  
DRUG

RIGHT  
PATIENT

RIGHT  
DOSE

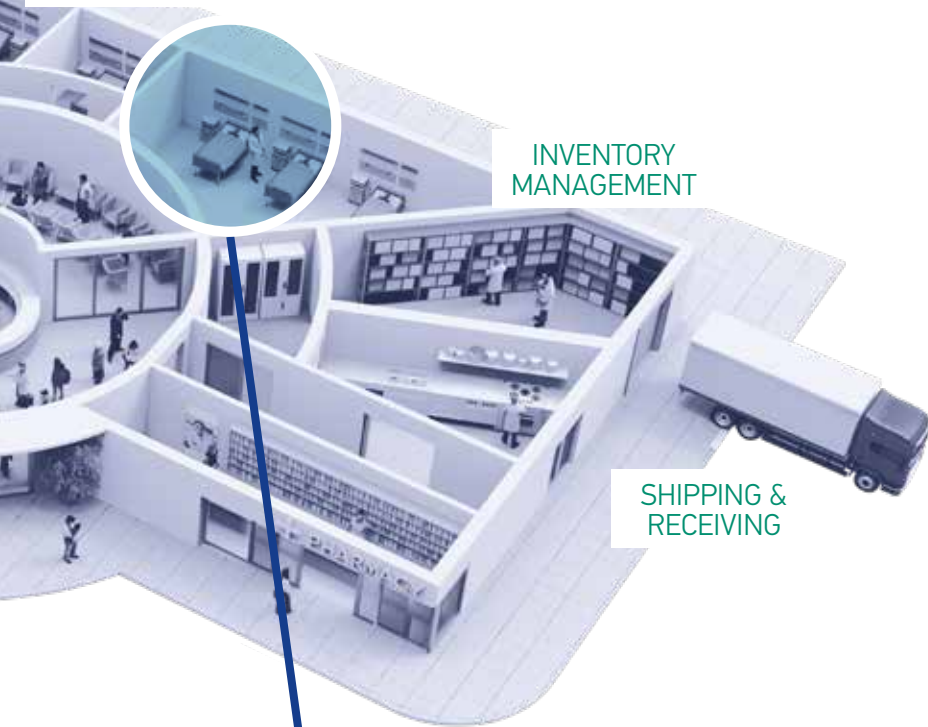
RIGHT  
ROUTE

RIGHT  
TIME

PATIENT  
FLOORS

INVENTORY  
MANAGEMENT

SHIPPING &  
RECEIVING



## BEDSIDE POINT-OF-CARE — BARCODE ADMINISTRATION — EMR/EHR

Bedside scanning and electronic medical records are widely used throughout the healthcare industry, enhancing the productivity and timeliness of medical staff while eliminating human error and poor decision-making. Datalogic solutions for barcoding ensure patient safety by working with healthcare systems to enforce five key patient rights: Right Patient, Right Drug, Right Dose, Right Route, Right Time.

BCMA (Barcode Medication Administration) is one of the main point-of-care technologies used in hospitals. It requires that a barcode reader scans both the medication and the patient wristband prior to administration. The hospital system receives the scanned information and verifies the five patient rights before the medication is given to the patient. BCMA helps avoid drug-drug interactions and allergies while ensuring a substantial reduction in medication errors.

The use of barcode technology at the bedside point-of-care improves efficiency in supply procurement, specimen identification, EMR/EHR access, and medication verification. The result is a leaner and more effective patient care operation, while integrated room-side kiosk can provide clinicians with immediate visibility of patient identity and key clinical information directly at the entrance the patient room.

# Focus on Memor 17 Healthcare

Memor 17 Healthcare is the new full-touch Android device specifically designed to help **front-line healthcare professionals** to deliver the best possible care inside hospitals, while always staying connected outside medical facilities. Memor 17 HC keeps workers **seamlessly connected inside the hospitals** with its Wi-Fi 6E, while ensuring **uninterrupted coverage** when visiting patients at home or navigating across medical facilities with its 5G capabilities. Healthcare professionals can also increase security and collaboration creating private and fast networks with Private **5G systems**. Designed for healthcare, Memor 17 HC can withstand **continuous disinfection**. It also allows workers to make **quick alarm or emergency calls** by customizing gestures or programmable buttons.



## Comfort and Efficiency

Designed to be comfortable in the hands of front-line healthcare workers, while the Corning™ Gorilla™ Glass 7 display protects against scratches and drops.



## Designed for continuous disinfection

Disinfectant-ready against a broad list of chemicals and disinfectants, this device and its accessories are designed to prevent germs and bacteria from accumulating on their surfaces.



## Uninterrupted coverage

Powered by the latest Qualcomm QC4490 platform, workers can enjoy the best connectivity inside and outside hospitals with WiFi6E and 5G.



## Fast and easy scanning

With our Green Spot and advanced DeepSight™ decoding technology, the Memor 17 HC scans barcodes at high speeds and in variable lighting conditions, even when they are damaged or dirty.



## Full set of dedicated accessories

Wireless charging cradles that are easy to use and clean, clips or hand straps, and protective boot to protect against accidental drops.



## Emergency or alarm calls

Easily launch emergency or alarm calls both inside and outside medical facilities using our programmable red button and custom gestures, allowing you to set specific actions for your device when needed.



## Smart dock

Transform your Memor device into a complete desktop workstation. Ideal for mobile carts, nursing stations, and office setup.



## SafeSwap™

Ultra-reliable swappable long lasting battery with SafeSwap™ capability and Smart Battery Management

## OTHER IMPORTANT BENEFITS





# Focus on Gryphon 4600 Healthcare

The key mission of scanners in the healthcare industry is to improve the quality of patient care while reducing medication errors. Additionally, healthcare environments have requirements that scanners need to be regularly cleaned and disinfected. The Datalogic Gryphon™ HC product series is specifically developed for healthcare applications with Disinfectant-Ready enclosures treated with anti-microbial additives and are designed to withstand daily cleaning with harsh disinfectant solutions. Ideally suited for stationary applications in administration, laboratory and hospital environments, the Gryphon™ HC product series desktop models offers an affordable corded solution, while the cordless models (STAR or Bluetooth®) provide extended mobility for cordless operations.



## Decode any 1D and 2D barcode symbology

Designed to read codes from wristband, LCD monitors, smartphones etc. including smaller, condensed codes.



## Designed for continuous disinfection

Disinfectant-ready against a broad list of chemicals and disinfectants, this device and its accessories are designed to prevent germs and bacteria from accumulating on their surfaces.



## Desktop and cordless solutions

Desktop model offers an affordable corded solution, while the cordless models (STAR or Bluetooth®) provide extended mobility.



## Fast and easy

Datalogic's 'Green Spot' technology provides additional visual good-read confirmation which is ideal for quiet environments such as point-of-care.



## Full set of dedicated accessories

Wireless charging cradles that are easy to use and clean, holders and stands are available to provide the best efficiency.



## Ideal for quiet environments such as bedside patient care

The vibration option coupled with the silent operating mode can be set to further increase the patients' comfort.



## Inductive charging advantages

Resistant to corrosion. Healthcare environments require frequent and aggressive cleaning to maintain infection control. Conductive contacts corrode over time due to the exposure of disinfectants leading to poor charging, increased device downtime, higher replacement, and maintenance costs. Inductive charging eliminates this issue entirely – No metal contacts, No Corrosion.



Damaged contacts on other devices





# Focus on Datalogic Smart Portal

The Smart Portal acts as an interactive information hub in healthcare environments, enhancing both patient and clinical workflows. Patients can use the kiosk to access directions to the appropriate department or clinical unit, obtain appointment information, and navigate the facility independently, reducing queues and administrative load. At the point of care, clinicians can consult the portal outside or at the entrance of patient rooms to quickly review patient records, treatment plans, and scheduled procedures, improving situational awareness, care coordination, and operational efficiency.

## Patient Navigation & Autonomous Services

Interactive 8.6" touchscreen kiosks guide patients through check-in, appointments, and facility navigation, providing directions to departments or clinical units. Bright display, audio prompts, and intuitive graphics ensure accessibility and a smoother, self-service experience, reducing queues and administrative workload.



## Clinician Room-Side Access & Centralized Hub

Installed at room entrances or bedside, the portal allows clinicians to quickly access patient records, treatment plans, and scheduled procedures, improving situational awareness and care coordination. Powered by the QC4490 platform, the device is future-proof and ready for seamless integration with third-party healthcare software, while high-speed connectivity (Wi-Fi 6E) ensures real-time access to critical information.



## Flexible Deployment for Healthcare Environment

The Smart Portal adapts to any healthcare setting with versatile installation options. It supports both standard power outlets and Power-over-Ethernet (PoE) and can be mounted on walls or furniture using VESA 75 brackets, enabling optimal placement without disrupting existing workflows.



## Maximize your investment with Datalogic Smart Portal

With support up to Android 19, customers will enjoy an industry-leading 4+4 years of comprehensive hardware and software support, with continuous updates and access to cutting-edge tools from our Datalogic Mobility Suite.



NFC READER



GREEN SPOT



POE OR DC INPUT



CHEMICAL CLEANINGS RESISTANCE



Wi-Fi 6E CERTIFIED



Bluetooth 5.3



QC4490



SCAN RANGE



EASE OF CARE



DATALOGIC SHIELD



Powered by DATALOGIC MOBILITY SUITE



**Medical Record**

Current Staff

Patient Name:

Birth date:

Address:

Phone Number:

# Healthcare benefits

## ANTIMICROBIAL PLASTIC

Datalogic's healthcare barcode readers are easily distinguished from their industrial counterparts by their white-and-green plastic housings. This plastic is embedded with silver ions that **prevent disease-causing bacteria and virus growth**. The oligodynamic effect of silver damages key enzymes in the cell membranes of pathogens, killing them and **slowing the infectious spread**. So these additives **reduce the risk of bacteria and other germs remaining on devices** and being passed between patients and providers.

Datalogic's enclosures for its medical barcode scanners and mobile computers are also **designed to resist harsh disinfectants**. The enclosures can withstand the multiple cleanings required each day by standard hospital hygiene protocols.



## SUSTAINABILITY

Datalogic's mobile computers are designed with sustainability in mind: through their **maximized product life-cycle**, they ensure durability with a rugged MIL-STD design and **up to 10 years of security updates, repairs, and technical support**—outlasting competitors. Their **energy efficiency** is enhanced by **removable, recyclable batteries**, a **Battery Health Manager app**, and an **Enterprise Battery Saver**, extending battery life by **20%**. As the **only devices in their category with a full wireless charging solution**, they eliminate charging pin failures and **reduce total cost of ownership by 25%**. Sustainability is further reinforced with **compact, FSC-certified packaging** and **post-consumer recycled plastic** in charging accessories. Additionally, its **multi-purpose design**—including NFC tap-to-pay and desktop mode—**reduces the need for multiple devices**, making Datalogic's Mobile Computers an eco-friendly, cost-effective choice.



## CONNECTED INTELLIGENCE SUITE

Datalogic Connected Intelligence Suite is a comprehensive **IoT cloud platform** designed to **manage and monitor all Datalogic DataCapture devices in healthcare settings**, including handheld scanners, fixed retail scanners, and Enterprise DataCapture Mobile Computers. By providing a centralized endpoint, it ensures **seamless management of your entire device fleet**.

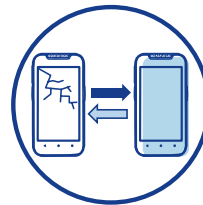
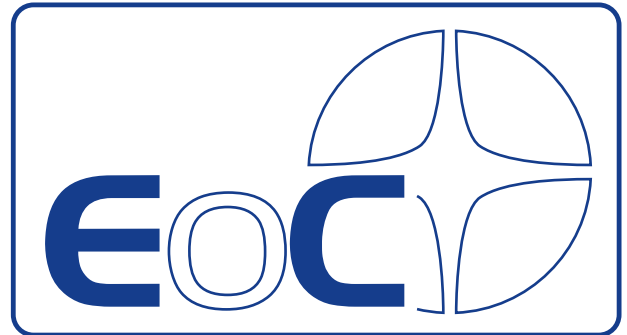
With real-time visibility into device performance, status, and location, the suite helps **healthcare organizations optimize device usage, reduce downtime, and improve operational efficiency**. A first version of the platform will soon be available, delivering key capabilities that support better workflow management and enhanced patient care.



# Service programs

Datalogic's EASEOFCARE Service Programs provide superior life-cycle support to ensure that products are always operating at peak performance.

Our market-leading Care programs are a key reason for customers to choose and keep Datalogic products, maximizing their uptime and lifecycle so that they can also be assured that their software is always running on a healthy and reliable device.



**FAST REPAIR TURNAROUND  
(OVERNIGHT / 2 DAYS / 5 DAYS)**



**ACCIDENTAL DAMAGE  
COVERAGE**



**BOTH WAYS FREIGHT  
PAID BY DATALOGIC**



**3-5 YEARS CONTRACT  
SERVICE OPTIONS**

# Product portfolio



GRYPHON™ 4600 SERIES



## HANDHELD SCANNERS

- Disinfectant Ready enclosures resistant to harsh chemical cleaning
- HC models with enclosures treated with antimicrobial additives (ISO22196 compliant)
- Ecodesign, lower carbon footprint
- Double camera, from near to far, fast reading
- Configurable white/red illumination
- Wireless communications and wireless charging
- Battery and supercap power packs, long lasting



POWERSCAN 9600 SERIES



- **Standard Range (SR)** and **High Performance (HP)** for standard / high resolution codes
- New **1D/2D Auto Range series** with extra long-range capabilities, able to scan at very short distances up to very far barcodes
- Ultra-rugged design, IP65 and IP67
- Embedded industrial connectivity, modular
- Wireless charging reducing TCO
- Doubled radio range and OLED display
- Smart batteries and diagnostics



MAGELLAN 900i



## FIXED PRESENTATION SCANNERS

- Advanced digital imaging provides excellent performance and reliability
- Quickly reads 1D and 2D barcodes, whether printed or displayed with Greenspot™ technology
- Subtle, adaptive illumination for user comfort
- Compact, ergonomic design is ideal for hands-free or handheld operations
- Image capture and adjustable stand



GRYPHON 4500 FIXED SERIES



## OEM BARCODE READERS

- Easy to integrate – Compact size
- Easy to use – Superior good read feedback
- Built to last – 5year warranty
- Wide Angle 1 MP optics – High motion tolerance



## MOBILE COMPUTERS



MEMOR™ 12/17 family



- Effortless scanning at fast pace in any environment with Green Spot technology
- Reliable and stable connectivity in crowded environments: Wi-Fi 6/6E, Bluetooth 5.3, 5G + Qualcomm 4490 platform
- Rugged and high-quality display: 6" inch capacitive multi-touch, FHD+ display, GG7
- Ultimate flexibility with three different charging options: USB-C, Wired cradles, Wireless cradles
- Quick and Effortless Payments with Multi-Side NFC reading technology



SMART PORTAL



- Reliable and stable connectivity in crowded environments: Wi-Fi 6/6E, Bluetooth 5.3, 5G + Qualcomm 4490 platform
- Fewer queues and faster service thanks to multi-function self-service capabilities.
- Effortless scanning at fast pace in any environment with Green Spot technology
- AI-ready insights to detect risks and optimize operations instantly.
- Flexible deployment anywhere with PoE or standard power and VESA mounting



CODISCAN



- Flexible Bluetooth wearable scanner with multiple comfortable mounting options: hand, neck, belt/pocket
- Small, lightweight super reliable device to improve operations productivity and accuracy
- 2 working shifts and up to 12,000 scans with a single charge
- Best-in-class scanning performances reduce TCO: 1D/2D Datalogic decoding library, smart-aiming system, Green Spot, 3 high-visible LEDs, audio and vibration feedback



MAGELLAN 900I OEM



- All digital imaging provides excellent performance and low TCO
- Quickly reads 1D and 2D barcodes from printed or mobile sources with Greenspot™ good read confirmation
- Dedicated OEM mount for easy kiosk or self checkout integration



MAGELLAN 1500I OEM



- Advanced digital imaging provides class-leading performance and reliability
- Seamlessly reads 1D and 2D barcodes, whether printed or displayed on mobile phones
- Compact, ergonomic design for hands-free or handheld operations



