

OPOS Getting Started



Datalogic USA, Inc.

959 Terry Street
Eugene, OR 97402
USA

Telephone: (541) 683-5700

Fax: (541) 345-7140

©2018 Datalogic S.p.A. and /or its affiliates

An Unpublished Work - All rights reserved. No part of the contents of this documentation or the procedures described therein may be reproduced or transmitted in any form or by any means without prior written permission of Datalogic S.p.A. and/or its affiliates ("Datalogic" or "Datalogic USA, Inc."). Owners of Datalogic products are hereby granted a non-exclusive, revocable license to reproduce and transmit this documentation for the purchaser's own internal business purposes. Purchaser shall not remove or alter any proprietary notices, including copyright notices, contained in this documentation and shall ensure that all notices appear on any reproductions of the documentation.

Should future revisions of this manual be published, you can acquire printed versions by contacting your Datalogic representative. Electronic versions may either be downloadable from the Datalogic website (www.datalogic.com) or provided on appropriate media. If you visit our website and would like to make comments or suggestions about this or other Datalogic publications, please let us know via the "Contact Datalogic" page.

Disclaimer

Datalogic has taken reasonable measures to provide information in this manual that is complete and accurate, however, Datalogic reserves the right to change any specification at any time without prior notice.

Datalogic and the Datalogic logo are registered trademarks of Datalogic S.p.A. in many countries, including the U.S. and the E.U. All other brand and product names may be trademarks of their respective owners.

Patents

See www.patents.datalogic.com for patent list.



Getting Started

Overview

This manual explains the OPOS installation process and it also provides a brief description of the installed components. A more detailed explanation for some of the installed components can be found in their respective documents.

The installed components are:

1. **Common Control Objects**, v1.14.1 (optional)
2. **Datalogic Service Objects**
The Datalogic Service Objects are packaged with the current OPOS control objects. They are fully compatible with the Unified POS Retail Peripheral Architecture and the OPOS appendix to that spec. To view the current version of the document, go online to the National Retail Federation at www.nrf-arts.org/download. The Service Objects support four types of DATA-LOGIC interfaces: RS232 Standard (also called Dual Cable), RS232 Single Cable, USB-COM, and OEM USB.
3. **DLWMIsvc**
DLWMIsvc is the service responsible for keeping the Windows Management Instrumentation updated with current Datalogic-managed device information.
4. **DLRMU**
The Datalogic Remote Management Update application is typically used to update the firmware of your Datalogic devices.
5. **DualTest**
The DualTest application can be used to test or verify proper functioning of your Datalogic-managed devices.
6. **OPOSPropertiesEditor**
The OPOS Properties Editor application allows you to modify various settings like data logging options, COM ports, baud rates, etc.

Installation

Installation can be performed in either of two ways: using a standard GUI installation or as a silent install from the Command Prompt. In either case, you must run the installer as Administrator.

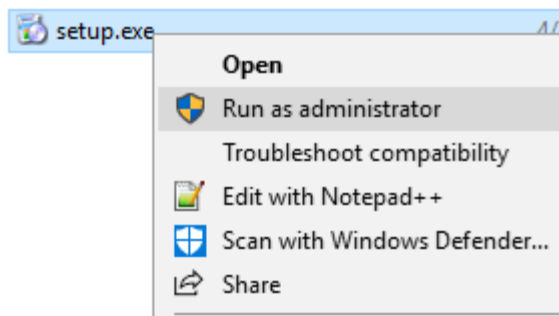


Regardless of your chosen installation method, take care to understand your requirements with respect to installing Common Control Objects. This topic is explained in Step 6 of the GUI Installation but the option to install Common Control Objects is relevant to both installation methods.

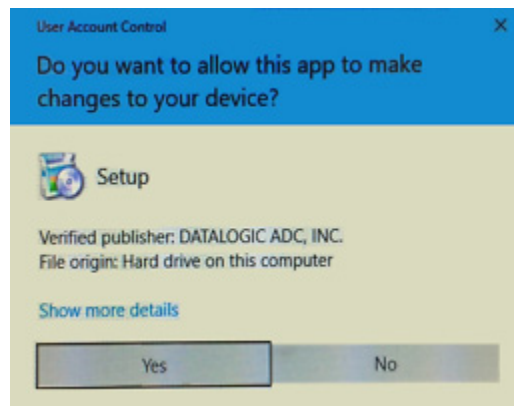
GUI Installation

To install, perform the following steps:

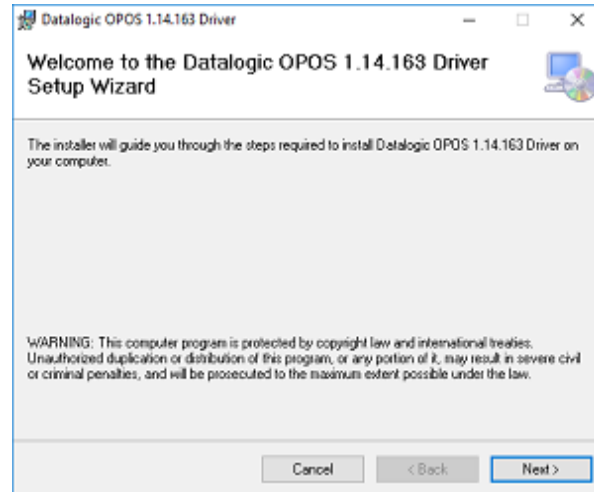
1. If you haven't already done so, download the most current install file for the **OPOS Drivers** from the Datalogic website (www.datalogic.com).
2. Right-click on **Setup.exe** and then select **Run as administrator** from the pop-up menu.



3. The setup dialog will appear. Click **Yes** to continue.

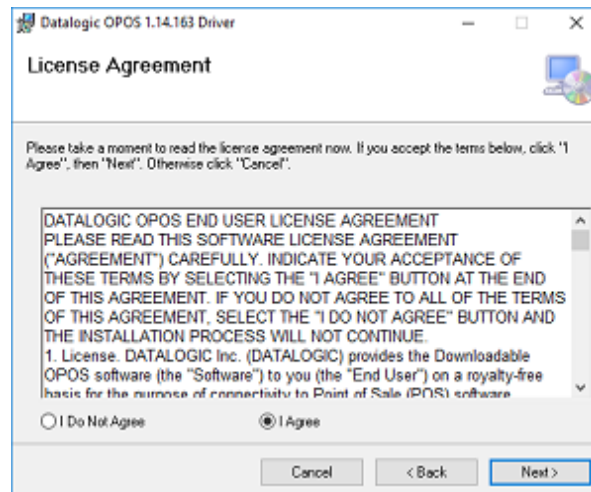


- The launch dialog will appear. Click **Next** to continue.

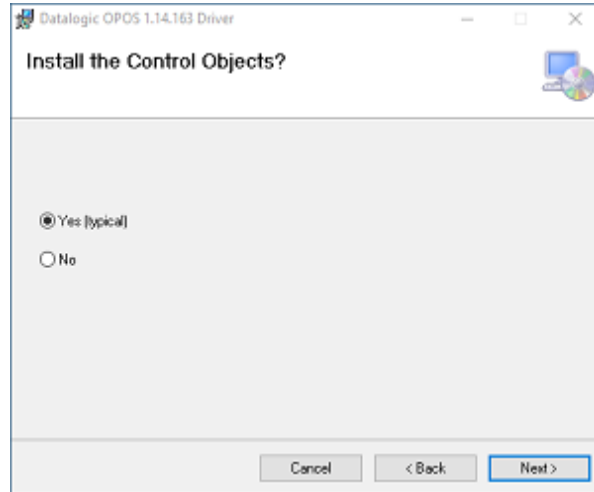
**NOTE**

The version field may be different depending on the version of the downloaded file.

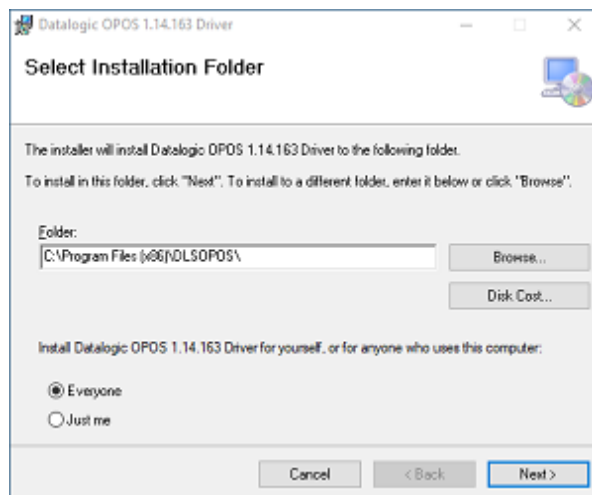
- Read the license agreement, select **I Agree** and then click **Next**.



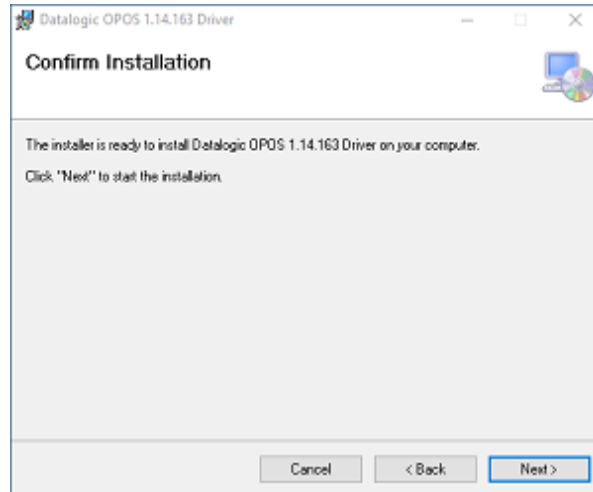
- The **Install the Control Objects** dialog is displayed. In most cases, a client will select **Yes**, choosing to use the Common Control Objects delivered with the OPOS driver installation. In rare cases, a client may select No because has installed Common Control Objects supplied by a third party. If you mistakenly select Yes, you can always reinstall your third party controls later.



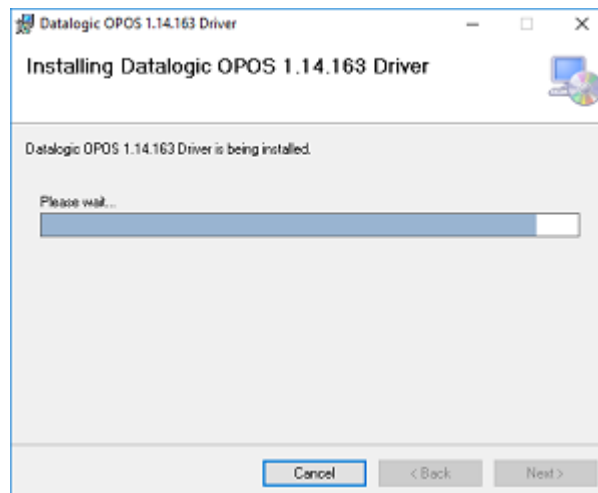
- The **Select Installation Folder** dialog allows you to designate the installation folder. The default location is the typical choice.



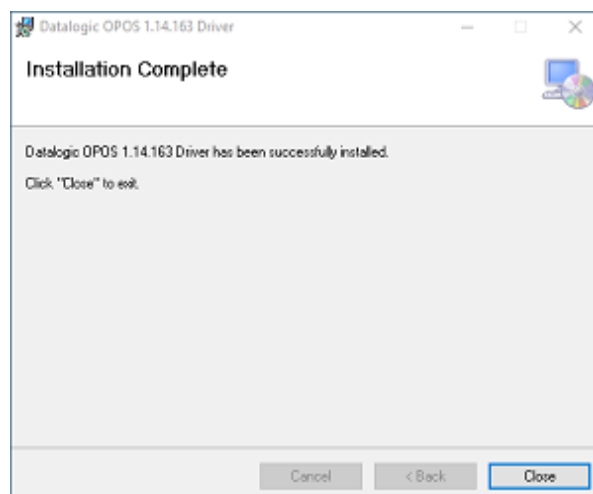
8. If you're ready to commit to the installation, click **Next**.



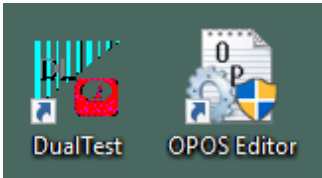
9. You'll see progress bars as the installation proceeds.



10. When the installation is complete, click **Close**.



11. After installation you should see two OPOS-related icons on your Desktop.



DualTest allows you to quickly test scanner and scale devices.

OPOS Editor allows you to configure various device settings.

Silent Install from Command Prompt

To perform a “silent install”

1. Open a Command Prompt window in administrator mode
2. Change Directory (cd) to the folder containing your msi file, e.g.
`Datalogic OPOS 1.14.163.msi`
3. If you want to install the Datalogic supplied Common Control Objects then execute the command:

```
msiexec.exe /i "Datalogic OPOS 1.14.163.msi"  
INSTALLCONTROLOBJECTS=1
```

4. Otherwise, if you are going to use third part Common Control Objects then execute the command:

```
msiexec.exe /i "Datalogic OPOS 1.14.163.msi"  
INSTALLCONTROLOBJECTS=0
```


©2018 Datalogic S.p.A. and /or its affiliates ▪ All rights reserved. ▪ Without limiting the rights under copyright, no part of this documentation may be reproduced, stored in or introduced into a retrieval system, or transmitted in any form or by any means, or for any purpose, without the express written permission of Datalogic S.p.A. and/or its affiliates ▪ Datalogic and the Datalogic logo are registered trademarks of Datalogic S.p.A. in many countries, including the U.S. and the E.U.

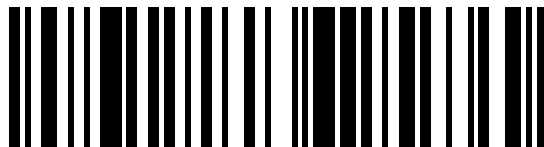


www.datalogic.com

Datalogic USA, Inc.

959 Terry Street | Eugene | OR 97402 | USA

Telephone: (1) 541-683-5700 | Fax: (1) 541-345-7140



820106614

(Rev. A)

May 2018

