

PROCEDURE

> *Recovery procedure*



Datalogic S.r.l.
Via S. Vitalino 13
40012 – Calderara di Reno
Italy

Recovery procedure rev. E

Ed.: 11/2019

© 2017-2019 Datalogic S.p.A. and/or its affiliates • ALL RIGHTS RESERVED. • Without limiting the rights under copyright, no part of this documentation may be reproduced, stored in or introduced into a retrieval system, or transmitted in any form or by any means, or for any purpose, without the express written permission of Datalogic S.p.A. and/or its affiliates.

Datalogic and the Datalogic logo are registered trademarks of Datalogic S.p.A. in many countries, including the U.S.A and the E.U.

Lighter Suite is trademark of Datalogic S.p.A. and/or affiliates. All other trademarks and brands are property of their respective owners.

Datalogic shall not be liable for technical or editorial errors or omissions contained herein, nor for incidental or consequential damages resulting from the use of this material.

FOREWORD

The laser system is provided with a **USB recovery disk** able to restore the system to the factory settings. The **USB recovery disk** should be used if the **Operating System is corrupted** or disks are **corrupted**.



WARNING!

All the existing data in the system will be overwritten. All existing data will be lost!

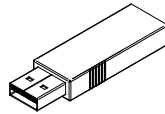


NOTE:

Images shown above are indicative only.

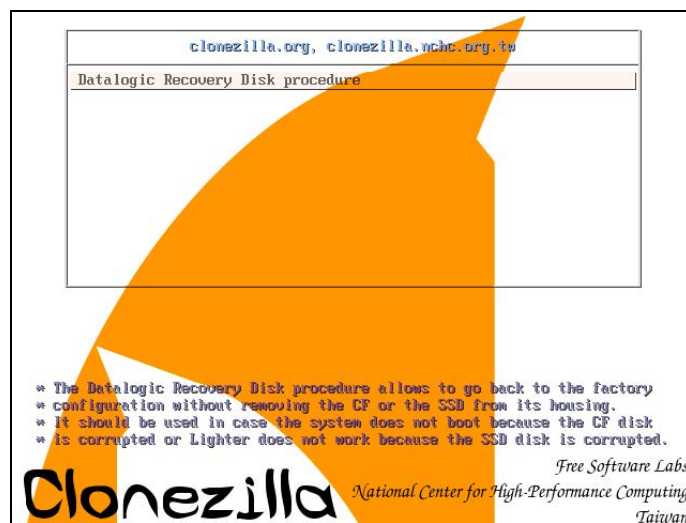
Required material

- **USB recovery disk**



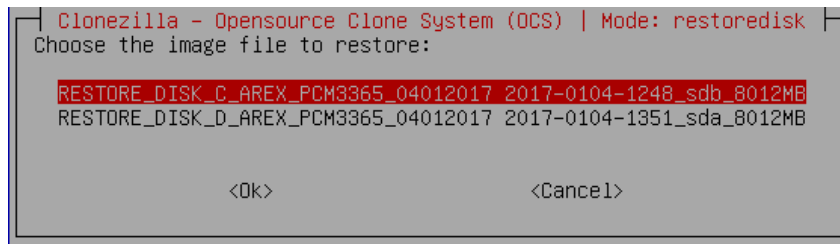
PROCEDURE

- Turn OFF the system
- Insert the USB recovery disk provided with the system in the USB port
- Turn ON the system and press **ESC** key to enter BIOS menu
- Go to BOOT menu, select **Hard Drive BBS Priorities** and press **ENTER** key
- Select **Boot Option #1** and press **ENTER** key
- Select the USB disk from the list and press **ENTER** key
- Press **F4** key
- Select **YES** and press **ENTER**
- The system will restart and Clonezilla live will boot from the USB disk
- Datalogic Recovery Disk procedure screen will appear:

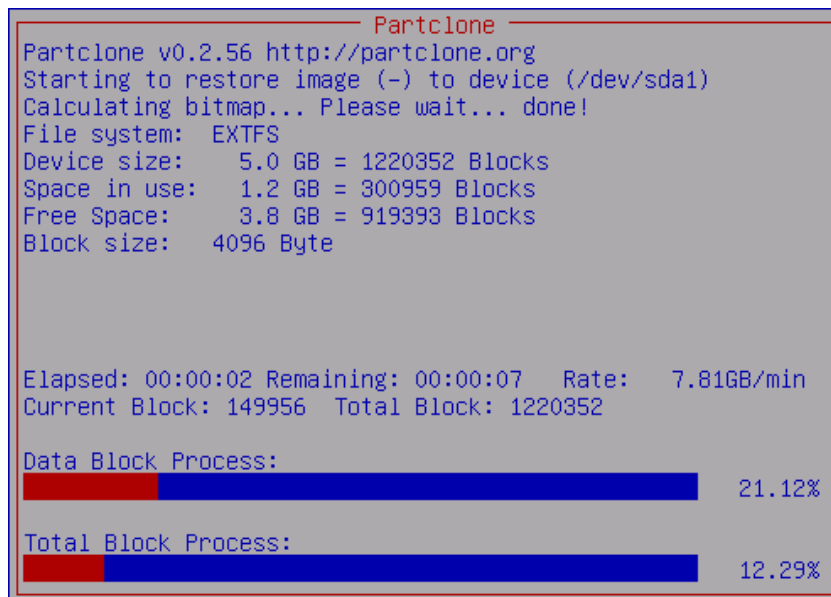


- Press **ENTER** key to continue

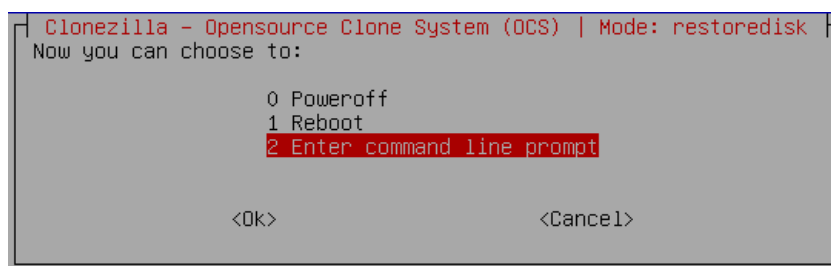
- Choose **RESTORE_DISK_C_PCM3365** to restore *disk C:* and press **ENTER** key



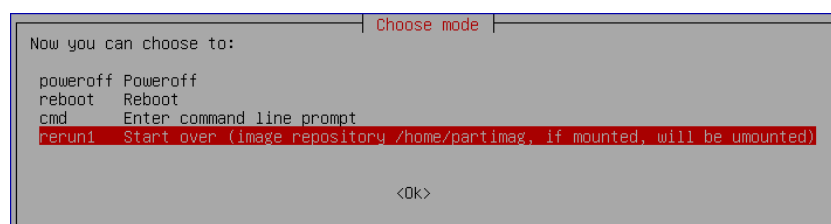
- In the next screen, choose **NANDrive** or **SATA_Flash** as target disk and press **ENTER** key
- In some cases you may be asked to confirm the operation. Press **ENTER** key to continue
- Wait for the end of the procedure (about 20 minutes):



- Select **Enter command line prompt** and press **ENTER** key

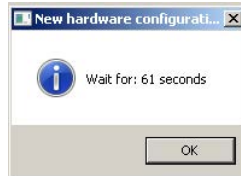


- Select **Start over** and press **ENTER** key

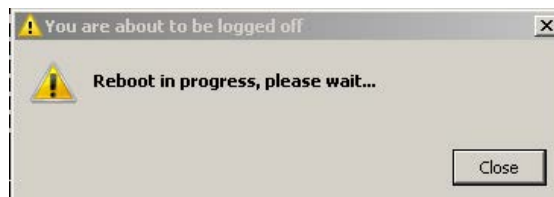


Initialize the Hardware

- Turn **ON** the system
- A message will advise you that the **system is initializing the new hardware**
- **WAIT** until the process is completed:



- A message advise you that **Windows will be automatically rebooted:**



WARNING!

DO NOT turn **OFF** or **UNPLUG** the system while Windows® is restarting.

- **WAIT** for system restart

Customize the system



NOTE:

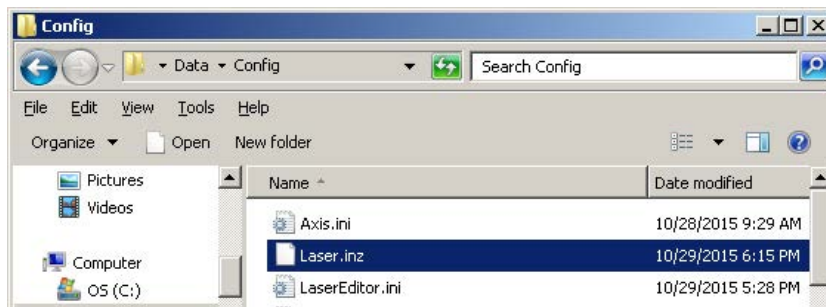
In order to work, the system must be customized with the correct configuration file

- An error message will advise you that Lighter configuration file is not present:

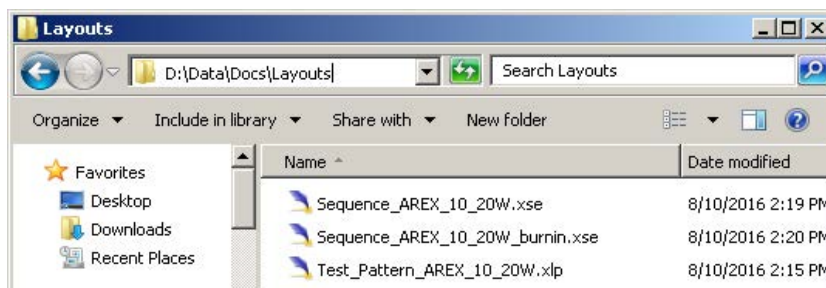


- Press **OK** to continue
- Insert the **USB recovery disk** provided with the system in the USB port
- Navigate to **Fileinz and report** folder on the USB recovery disk

- Copy customized **Laser .inz** file in **D:\DATA\CONFIG** folder on the system



- Select **Test Layouts** folder on the USB recovery disk
- Select the right **test layouts files** based on the laser system model
- Copy the selected **test layouts files** file in **D:\DATA\DOCS\LAYOUTS** folder on the system



- **Shut down** the system:



WARNING! **DO NOT** turn **OFF** or **UNPLUG** the system while Windows® is shutting down.

- **WAIT** until system shuts down
- Remove the USB recovery disk from the USB port
- **Power off** the system



 **DATALOGIC**

www.datalogic.com