

---

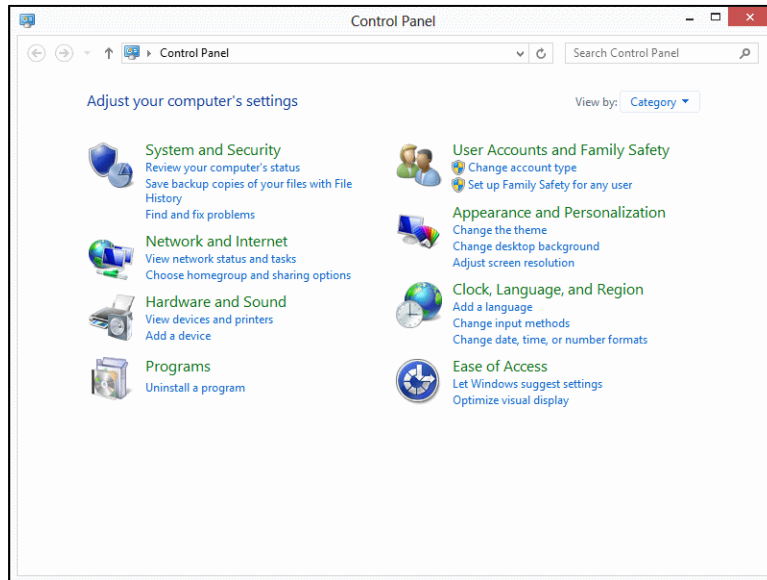
## Installing WMDC on computers running Microsoft Windows 8

---

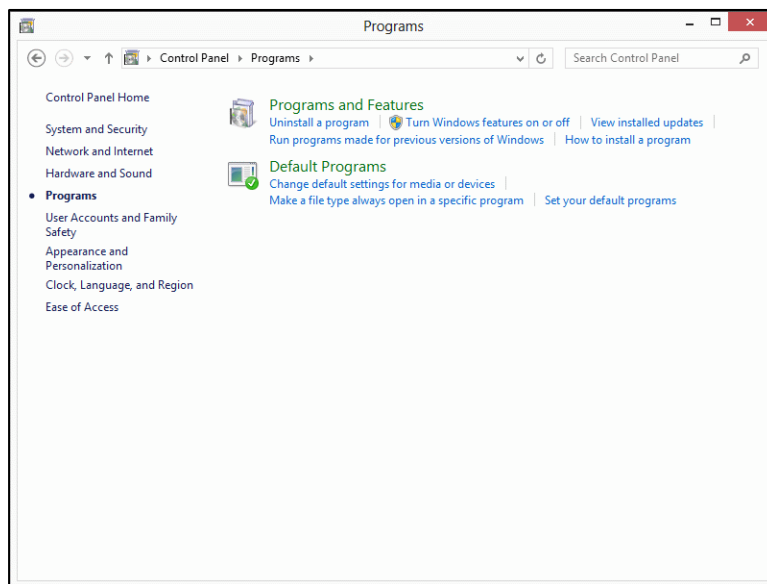
Windows 8 will automatically install WMDC when you connect your first Windows Mobile device but there is **one pre-requisite**: you have to let Windows 8 **install** .NET Framework 3.5 before it will work.

Follow the directions below to get this working

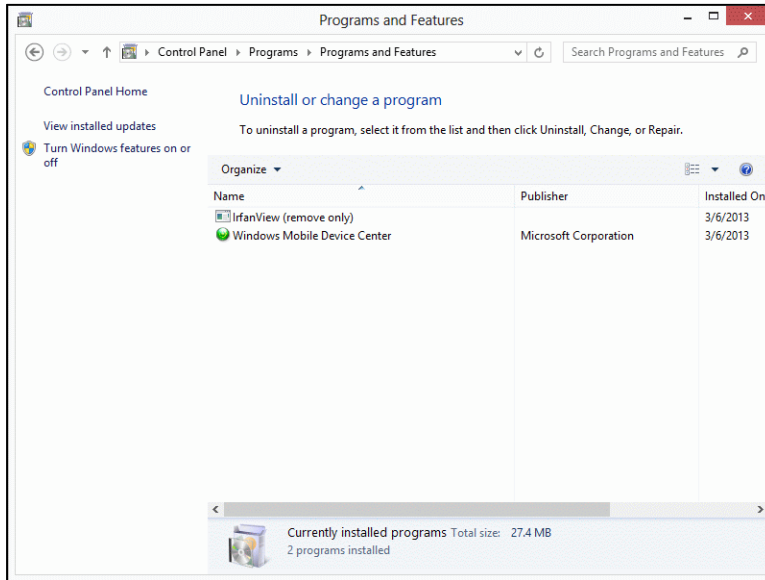
Open the Windows 8 – Control Panel, click on "Programs"



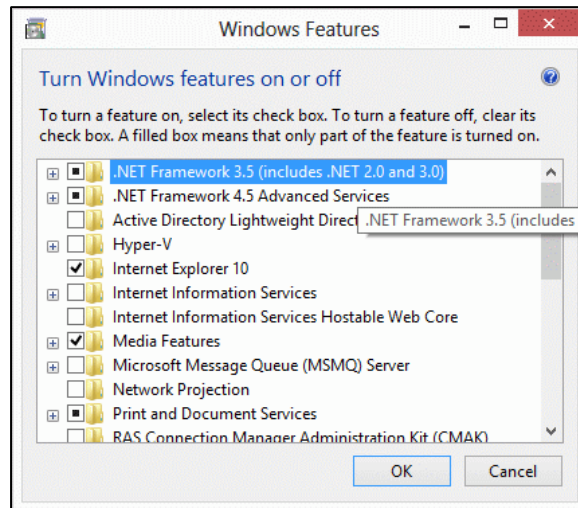
Click "Programs and Features":



Click "Turn Windows Features on or off" on the left:



Click the checkbox before ".NET Framework 3.5 (includes .NET 2.0 and 3.0)"



Wait until the installation has been downloaded and finished.

...WAIT!...

When finished, plug the USB connector of the Windows Mobile device into the Windows 8 PC.

Windows 8 will download the drivers and install WMDC.

You should now have WMDC on your Windows 8 PC:

