

OPOS Properties Editor (OPE)



Datalogic USA, Inc.

959 Terry Street
Eugene, OR 97402
USA

Telephone: (541) 683-5700
Fax: (541) 345-7140

©2017 Datalogic S.p.A. and /or its affiliates

An Unpublished Work - All rights reserved. No part of the contents of this documentation or the procedures described therein may be reproduced or transmitted in any form or by any means without prior written permission of Datalogic S.p.A. and/or its affiliates ("Datalogic" or "Datalogic USA, Inc."). Owners of Datalogic products are hereby granted a non-exclusive, revocable license to reproduce and transmit this documentation for the purchaser's own internal business purposes. Purchaser shall not remove or alter any proprietary notices, including copyright notices, contained in this documentation and shall ensure that all notices appear on any reproductions of the documentation.

Should future revisions of this manual be published, you can acquire printed versions by contacting your Datalogic representative. Electronic versions may either be downloadable from the Datalogic website (www.datalogic.com) or provided on appropriate media. If you visit our website and would like to make comments or suggestions about this or other Datalogic publications, please let us know via the "Contact Datalogic" page.

Disclaimer

Datalogic has taken reasonable measures to provide information in this manual that is complete and accurate, however, Datalogic reserves the right to change any specification at any time without prior notice.

Datalogic and the Datalogic logo are registered trademarks of Datalogic S.p.A. in many countries, including the U.S. and the E.U. All other brand and product names may be trademarks of their respective owners.

Patents

See www.patents.datalogic.com for patent list.



Table of Contents

OPOS PROPERTIES EDITOR (OPE)	1
Installation	1
Running the application	1
Overview	2
Use Cases	3
Modifying a property	3
Cloning a device profile	4
Deleting a device profile	5
Exporting a device profile	6

NOTES



OPOS Properties Editor (OPE)

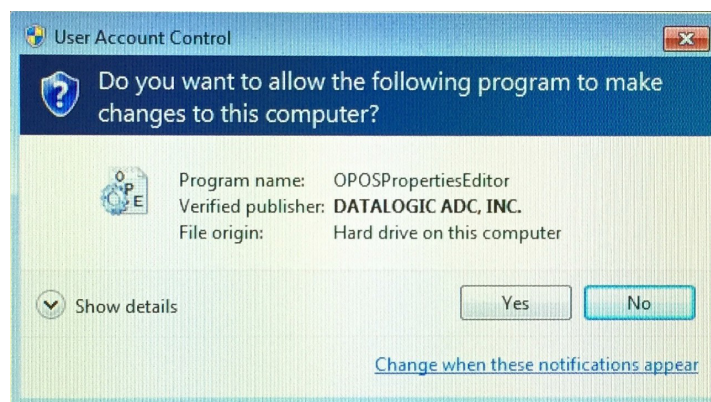
Installation

The OPOS Properties Editor is installed as part of the general OPOS distribution and its application icon is installed on your desktop.



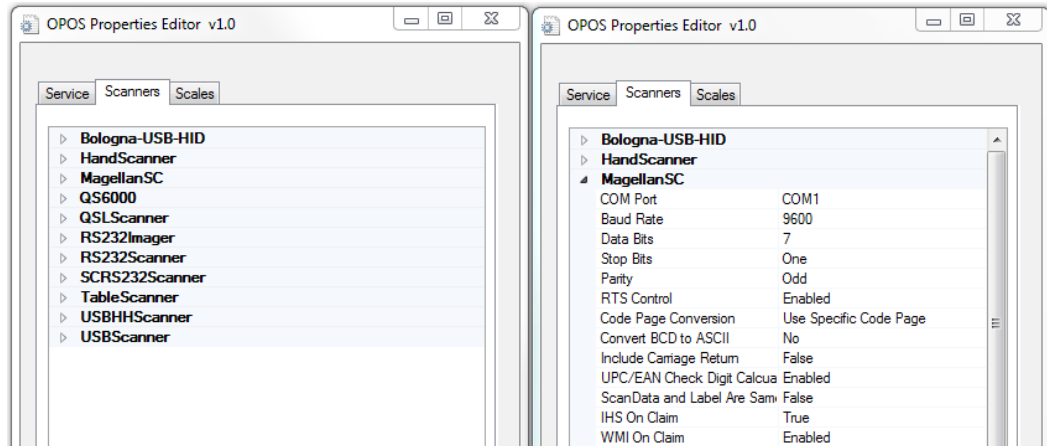
Running the application

Start the application by double-clicking the desktop icon. Depending on your computer's User Account Control (UAC) settings, you may encounter the following dialog. If it appears, simply click Yes to proceed.

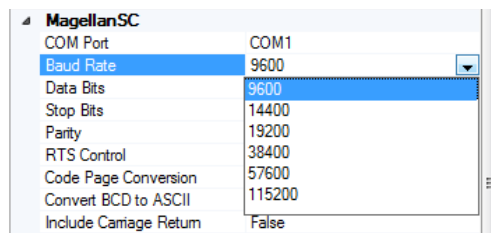


Overview

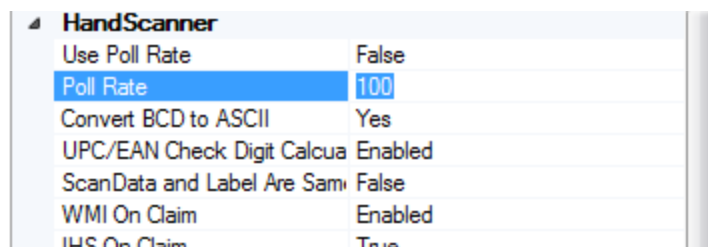
The OPOS Properties Editor is designed as a tab dialog and it uses a property grid to manage editable values. The device profiles are differentiated by type (Scanners, Scales) and each device is listed alphabetically, as a header, within its device category. The properties associated with a header can be collapsed and expanded by clicking on the small triangle to the left side of the header.



The majority of properties are presented as drop-down controls with finite options:



A few properties allow textual input:



Use Cases

The OPOS Properties Editor supports the following use cases:

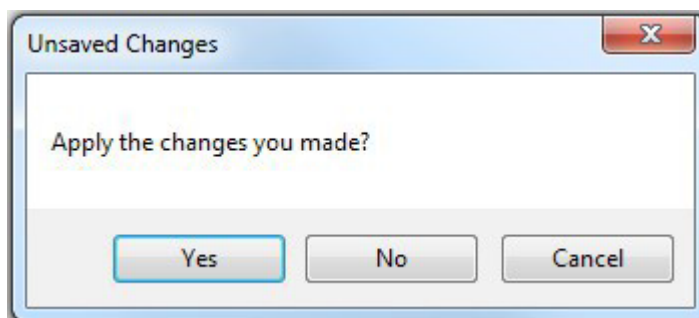
- Modifying the properties of a device profile.
- Cloning a device profile.
- Deleting a device profile.
- Exporting a device profile (as a .reg file).

Modifying a property

1. Navigate to the device profile of interest.
2. Select the property and change its value as needed.
3. Repeat if you want to make changes to other properties.
4. When finished, click *Apply* (at the bottom of the application).

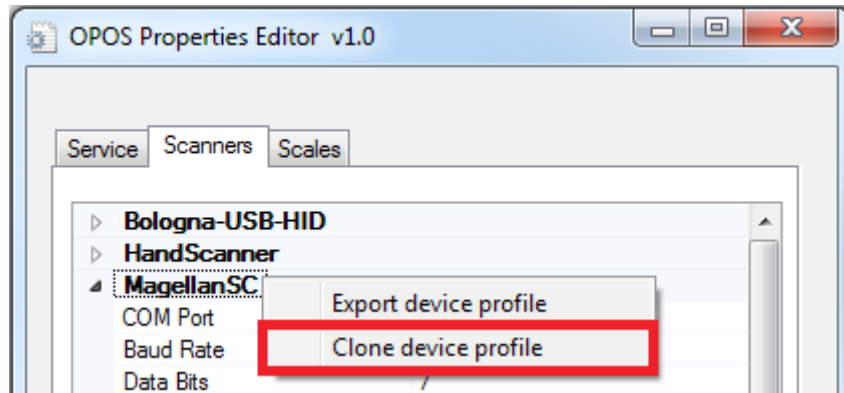


You don't need to click *Apply* every time you change the value of a property. Instead, you can edit multiple properties and then click *Apply* just once when finished. If you attempt to exit the application after making changes, the application will remind you to *Apply*:



Cloning a device profile

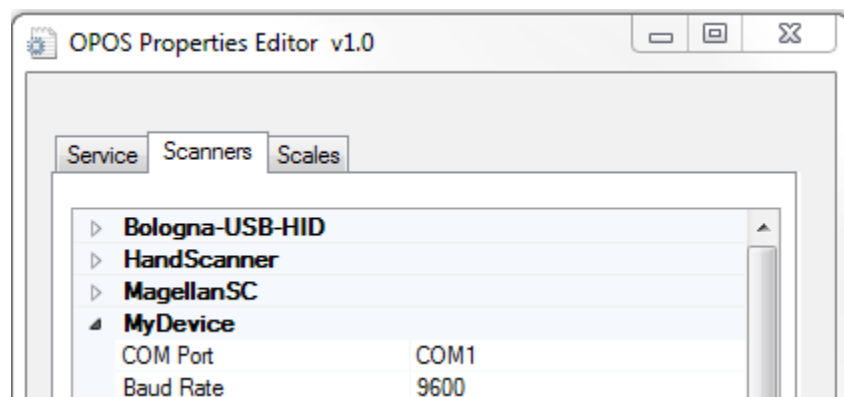
1. Navigate to the device profile of interest.
2. Right-click the device header, then select *Clone device profile*.



3. Enter your *New Profile Name* and then click Ok.



Your new device profile will now appear alphabetically in the list of device profiles, and you can modify its properties as needed.

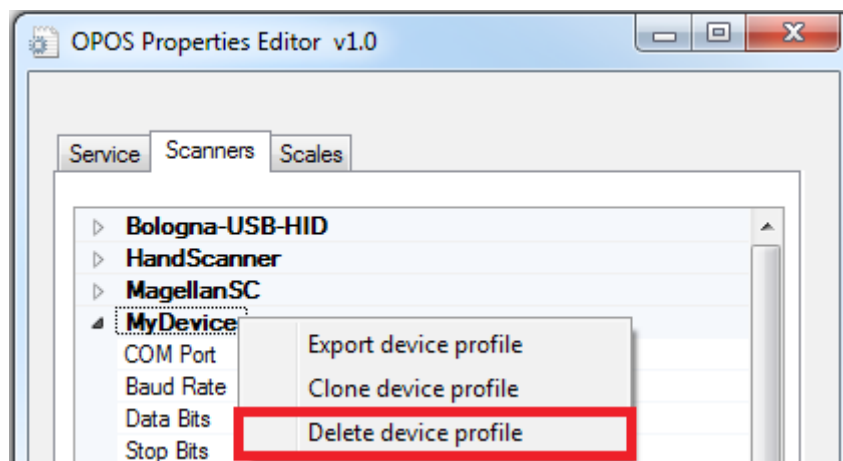


Deleting a device profile

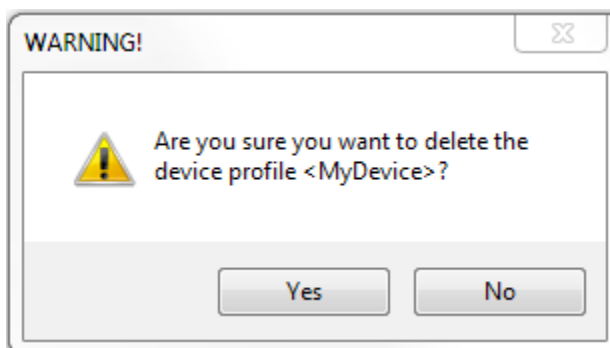
OPE allows you to delete device profiles that you have created; OPE will not allow you to delete a device profile that was installed by the OPOS installer.

To delete a device profile

1. Navigate to the device profile of interest.
2. Right-click on the device header, then select *Delete device profile*.

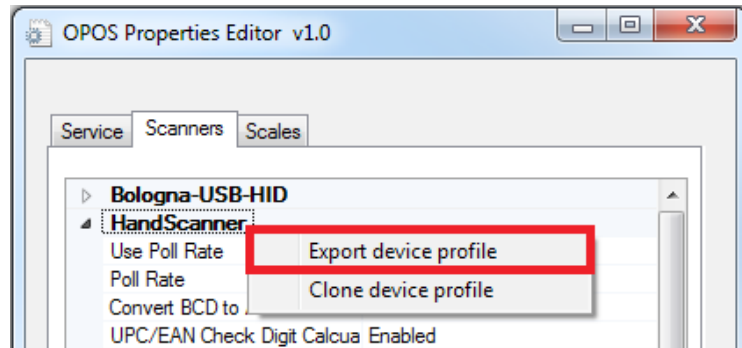


3. Click *Yes* to verify that you want to delete the profile.



Exporting a device profile

1. Navigate to the device profile of interest.
2. Right-click on the device header.
3. Select Export device profile.
4. Enter the name of the .reg you want to create and then Save.



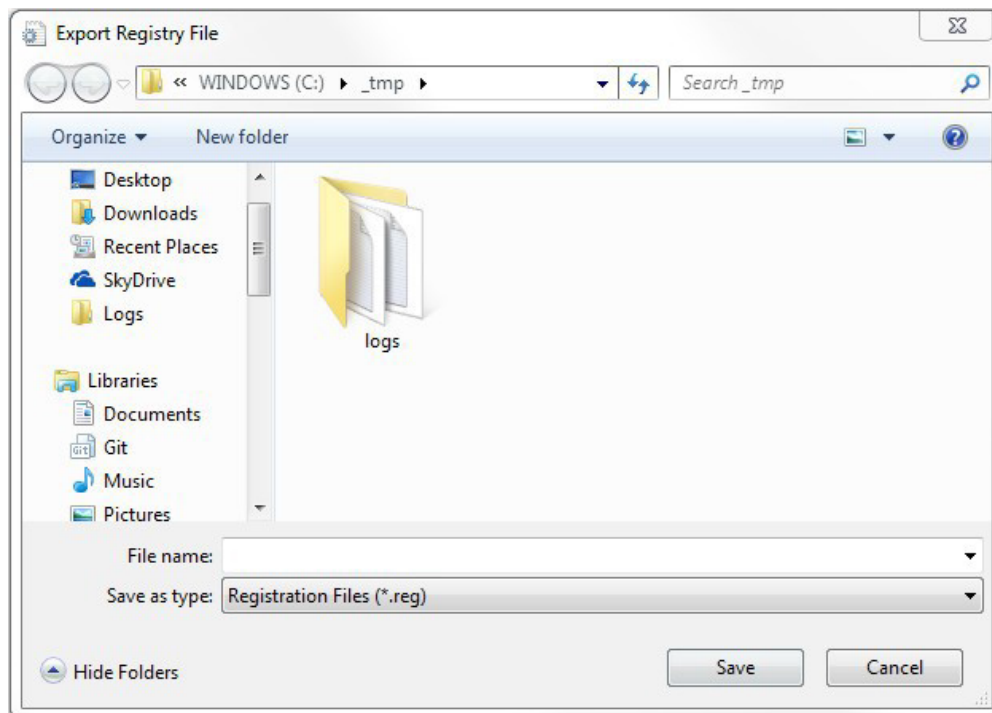
NOTE

The device profile name is independent of the name you provide for your .reg file. In other words, if you cloned a device profile and named it MyDevice and then exported it to separate files abc.reg and xyz.reg, the two files are absolutely identical; MyDevice is described by both .reg files.



CAUTION

CRITICAL: If creating a .reg file for 32 bit Windows OS you must edit the file and be sure to remove any references to the Wow6432Node.



©2017 Datalogic S.p.A. and /or its affiliates ■ All rights reserved. ■ Without limiting the rights under copyright, no part of this documentation may be reproduced, stored in or introduced into a retrieval system, or transmitted in any form or by any means, or for any purpose, without the express written permission of Datalogic S.p.A. and/or its affiliates ■ Datalogic and the Datalogic logo are registered trademarks of Datalogic S.p.A. in many countries, including the U.S. and the E.U.

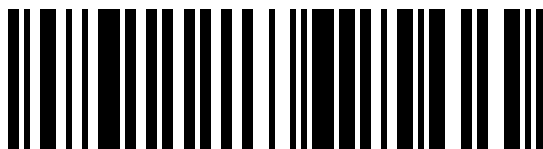


www.datalogic.com

Datalogic USA, Inc.

959 Terry Street | Eugene | OR 97402 | USA

Telephone: (1) 541-683-5700 | Fax: (1) 541-345-7140



820100414

(Rev. A)

Nov.2017

